


WAAS CH 90410 W02A	APP CRS 023°	Rwy Idg TDZE 7539 Apt Elev 7539
--	------------------------	---

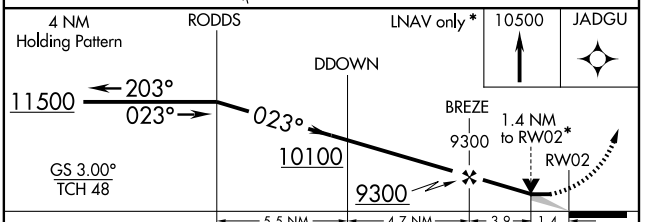
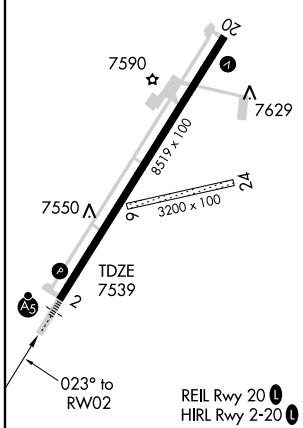
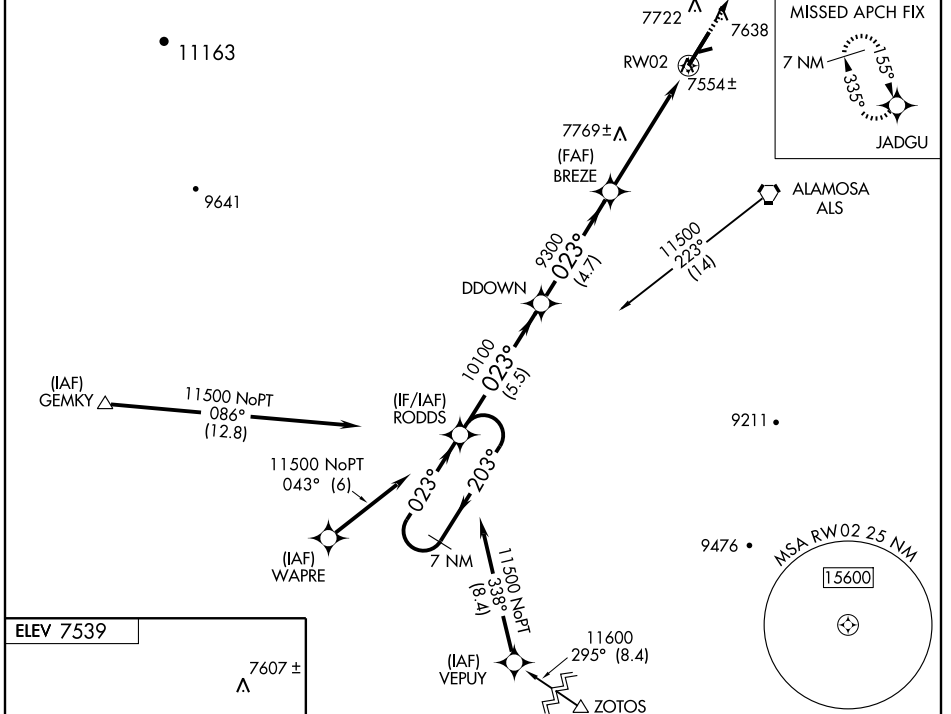
RNAV (GPS) RWY 2

ALAMOSA/SAN LUIS VALLEY RGNL/BERGMAN FIELD (ALS)

▽ For inoperative MALSR, increase LNAV/VNAV Cat D visibility to 1 mile. When local altimeter setting not received, procedure NA.
▲ For uncompensated Baro-VNAV systems, LNAV/VNAV NA below -30°C (-22°F) or above 34°C (93°F). DME/DME RNP -0.3 NA.

MALSR

MISSED APPROACH: Climb to 10500 direct JADGU and hold.

ASOS 135.175	DENVER CENTER 128.375 379.95	UNICOM 122.8 (CTAF) ①
------------------------	--	--



CATEGORY	A	B	C	D
LPV DA	7739-½ 200 (300-½)			
LNAV/ DA VNAV	7804-½ 265 (300-½)			7804-¾ 265 (300-¾)
LNAV MDA	8020-½ 481 (500-½)		8020-¾ 481 (500-¾)	8020-1 481 (500-1)
CIRCLING	8040-1 501 (600-1)		8040-1½ 501 (600-1½)	8100-2 561 (600-2)

RNAV (GPS) RWY 2

SW-1, 22 OCT 2009 to 19 NOV 2009

SW-1, 22 OCT 2009 to 19 NOV 2009