

ALAMOSA, COLORADO

AL-18 (FAA)

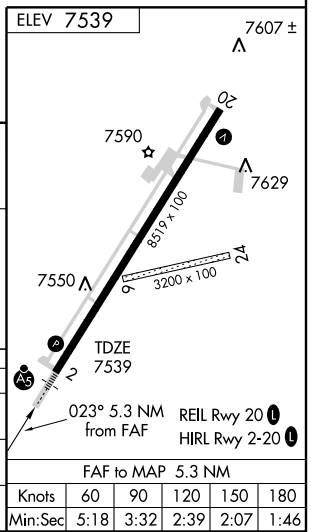
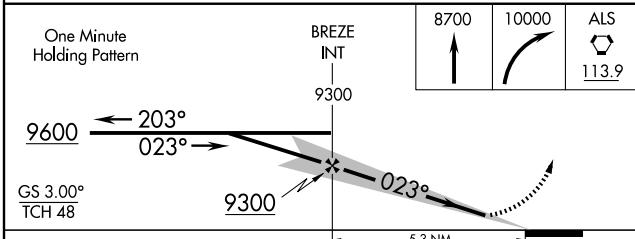
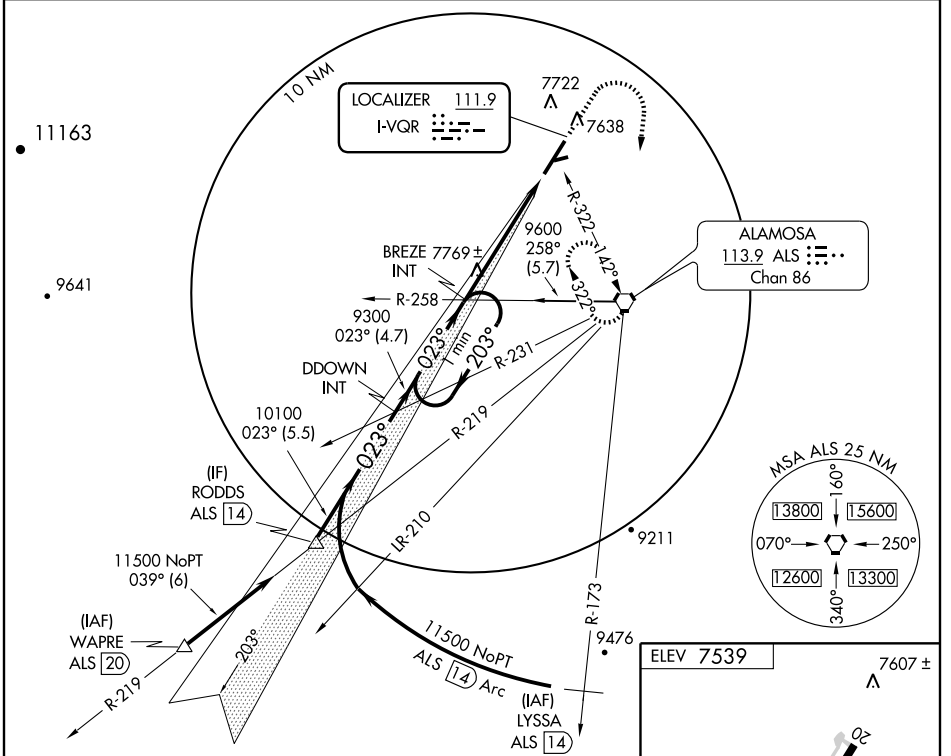
ILS or LOC RWY 2

ALAMOSA/SAN LUIS VALLEY RGNL/BERGMAN FIELD (ALS)

LOC I-VQR 111.9	APP CRS 023°	Rwy Idg 8519
		TDZE 7539
		Apt Elev 7539

<p>When local altimeter setting not received, procedure NA.</p>	<p>MALS R</p>	<p>MISSED APPROACH: Climb to 8700, then climbing right turn to 10000 direct ALS VORTAC and hold.</p>

ASOS 135.175	DENVER CENTER 128.375 379.95	UNICOM 122.8 (CTAF)
------------------------	--	-------------------------------



CATEGORY	A	B	C	D
S-ILS 2	7739-1/2 200 (200-1/2)			
S-LOC 2	8020-1/2 481 (500-1/2)	8020-3/4 481 (500-3/4)	8020-1 481 (500-1)	
CIRCLING	8040-1 501 (600-1)	8040-1 1/2 501 (600-1 1/2)	8100-2 561 (600-2)	

FAF to MAP 5.3 NM

Knots	60	90	120	150	180
Min:Sec	5:18	3:32	2:39	2:07	1:46

ALAMOSA, COLORADO
Amdt 1 09071

ALAMOSA/SAN LUIS VALLEY RGNL/BERGMAN FIELD (ALS)
37°26'N-105°52'W

ILS or LOC RWY 2

SW-1, 22 OCT 2009 to 19 NOV 2009

SW-1, 22 OCT 2009 to 19 NOV 2009