

# RNAV (GPS) RWY 15

ALMA/ BACON COUNTY (AMG)

APP CRS	Rwy Idg	<b>5000</b>
<b>156°</b>	TDZE	<b>200</b>
	Apt Elev	<b>200</b>

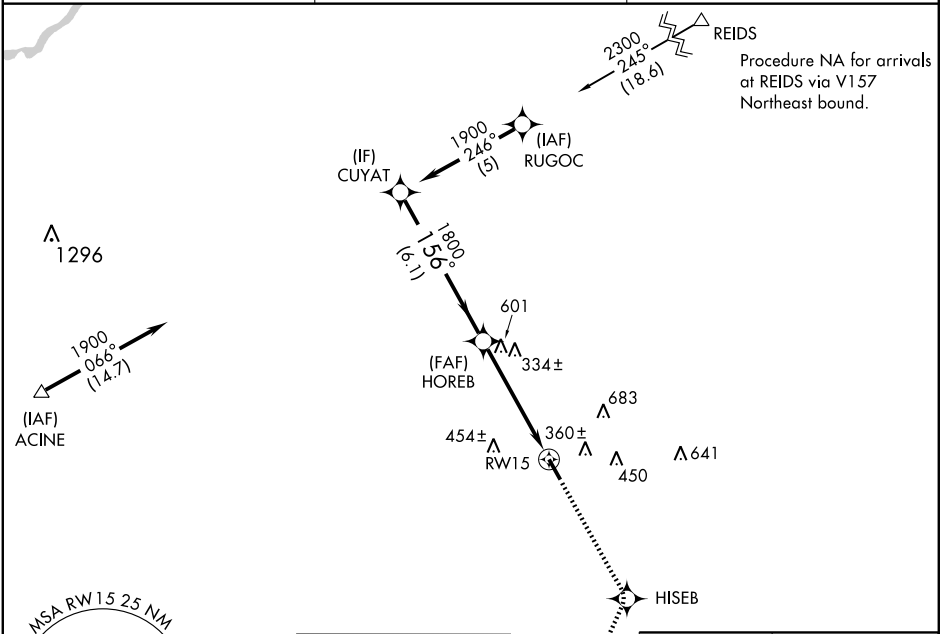
**V** VDP NA when using Vidalia altimeter setting. DME/DME RNP-0.3 NA.  
**A** Straight-in minimums NA at night. When local altimeter setting not received, use Vidalia altimeter setting and increase all MDA 120 feet increase LNAV Cats. C and D visibility ½ mile, and Circling Cats. C and D visibility ¼ mile.

**MISSED APPROACH:** Climb to 2300 direct HISEB and via 209° track to AYS VORTAC and hold.

ASOS  
**118.325**

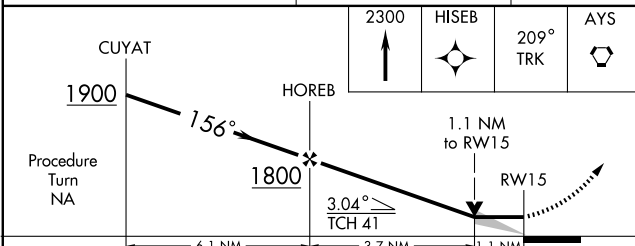
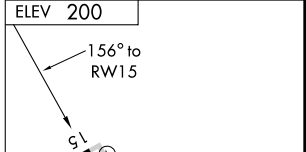
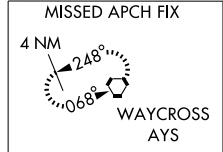
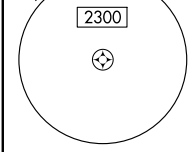
JACKSONVILLE CENTER  
**132.3 290.4**

UNICOM  
**122.7 (CTAF) 0**



SE-4, 22 OCT 2009 to 19 NOV 2009

SE-4, 22 OCT 2009 to 19 NOV 2009



2300	HISEB	209° TRK	AYS
------	-------	----------	-----

CATEGORY	A	B	C	D
LNAV MDA	600-1 400 (400-1)		600-1¼ 400 (400-1¼)	
CIRCLING	720-1	520 (600-1)	720-1½ 520 (600-1½)	800-2 600 (600-2)

