

LOC/DME RWY 30

ALLIANCE MUNI (AIA)

| | | |
|--|------------------------|---|
| LOC/DME I-BYE 108.35 Chan 20 (Y) | APP CRS 303° | Rwy Idg 9202 TDZE 3927 Apt Elev 3931 |
|--|------------------------|---|

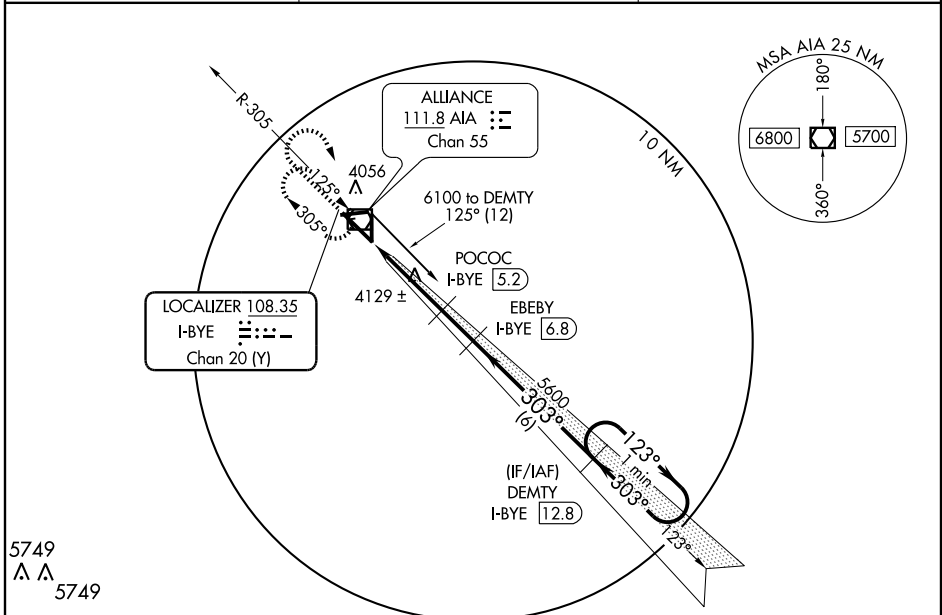
NA When local altimeter setting not received, use Scottsbluff altimeter setting and increase all MDAs 100 feet, S-30 Cats C/D visibility ¼ mile and circling Cat C ¼ mile. For inoperative MALSR, increase S-30 Cats A and B visibility to 1 mile. VDP NA when using Scottsbluff altimeter setting.

MALSR MISSED APPROACH: Climb to 5700 then right turn direct AIA VOR/DME and hold.

ASOS
135.075

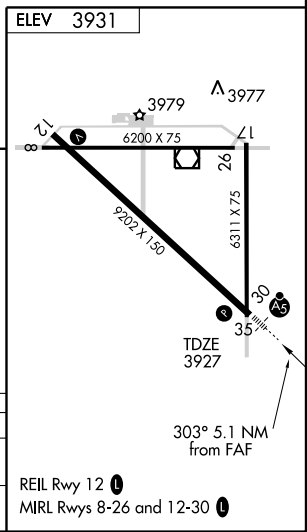
DENVER CENTER
127.95 338.2

UNICOM
123.0 (CTAF) 0



NC-2, 22 OCT 2009 to 19 NOV 2009

NC-2, 22 OCT 2009 to 19 NOV 2009



| | | | | |
|-----------------|-----------------------|-----------------------|-------------------------------|----------------------------|
| 5700 | AIA 111.8 | EBEBY I-BYE 6.8 | DEMTY I-BYE 12.8 | One Minute Holding Pattern |
| POCOC I-BYE 5.2 | POCOC I-BYE 3 | I-BYE 1.7 | 5080 | 5600 |
| 1.3 | 2.2 NM | 1.6 NM | 6 NM | |
| CATEGORY | A | B | C | D |
| S-30 | 4380-3/4 | 453 (500-3/4) | | 4380-1 453 (500-1) |
| CIRCLING | 4380-1 449 (500-1) | 4400-1 469 (500-1) | 4440-1 1/2 509 (600-1 1/2) | 4500-2 569 (600-2) |