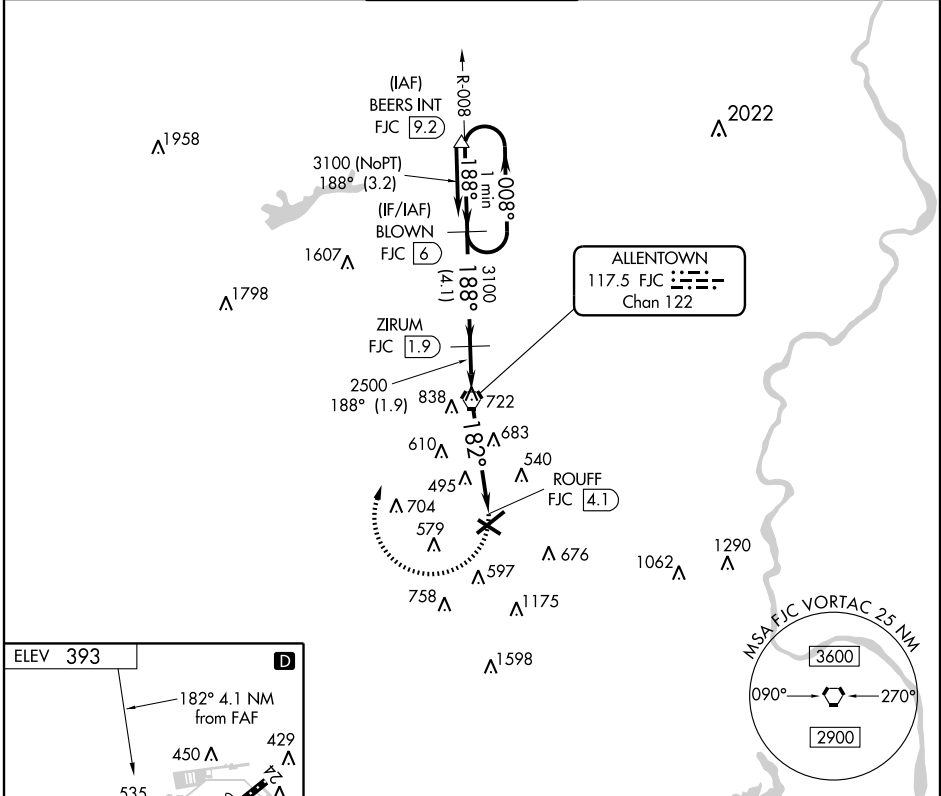


VORTAC FJC <b>117.5</b> Chan <b>122</b>	APP CRS <b>182°</b>	Rwy Idg TDZE Apt Elev	<b>N/A</b> <b>N/A</b> <b>393</b>
---	------------------------	-----------------------------	--

▼ If local altimeter setting not received, use Quakertown  
▲ NA altimeter setting and increase all MDAs 60 feet.

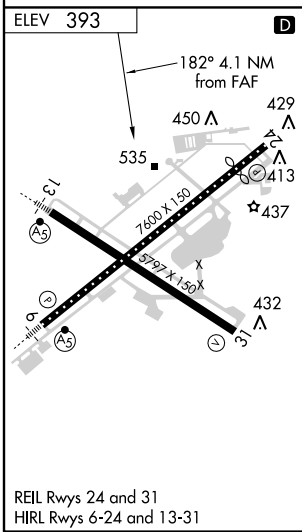
**MISSED APPROACH:** Climbing right turn to 3100 direct FJC VORTAC then via FJC R-008 to BLOWN/6 DME and hold.

ATIS <b>126.975</b>	ALLENTOWN APP CON <b>119.65 397.9</b>	ALLENTOWN TOWER <b>120.5 257.95</b>	GND CON <b>121.9 257.95</b>	CLNC DEL <b>124.05 257.95</b>
------------------------	--	--	--------------------------------	----------------------------------

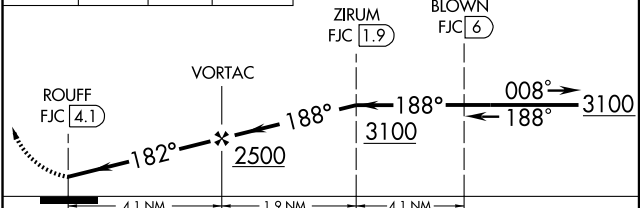


NE-4, 22 OCT 2009 to 19 NOV 2009

NE-4, 22 OCT 2009 to 19 NOV 2009



3100	FJC 117.5	FJC R-008	BLOWN FJC [6]	One Minute Holding Pattern
------	--------------	--------------	------------------	----------------------------



CATEGORY	A	B	C	D
CIRCLING	940-1	547 (600-1)	940-1½ 547 (600-1½)	980-2 587 (600-2)