

# RNAV (GPS) Y RWY 13

ALLENTOWN / LEHIGH VALLEY INTL (ABE)

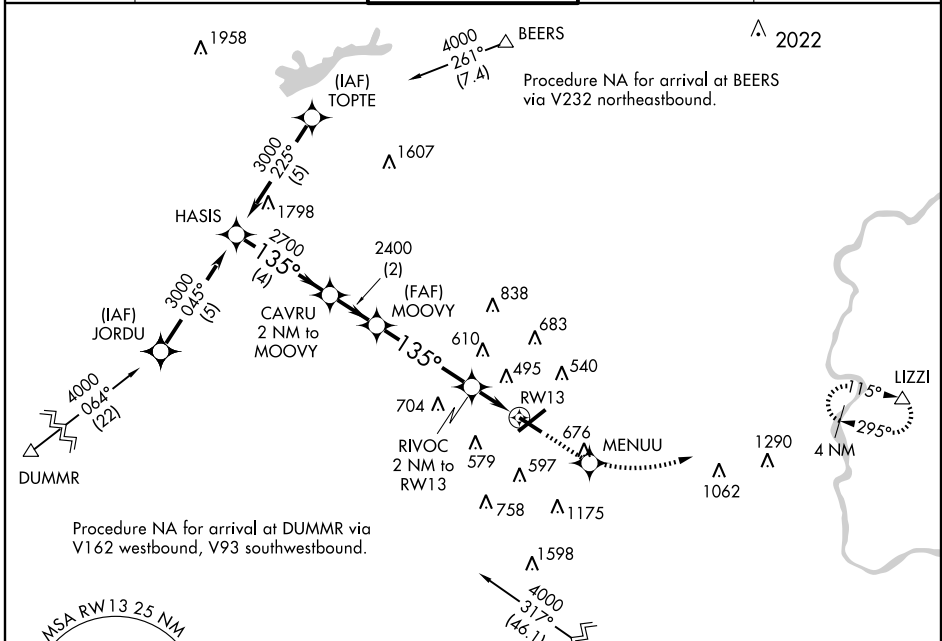
APP CRS	Rwy Idg	<b>5797</b>
<b>135°</b>	TDZE	<b>387</b>
	Apt Elev	<b>394</b>

**GPS or RNP-0.3 required. DME/DME RNP-0.3 NA.**  
 For inoperative MALS R increase LNAV Cat. D  
**NA** visibility to 1 1/4 mile.

**MALS R**

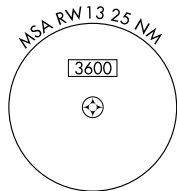
**MISSED APPROACH:** Climb to 3000 direct MENUU WP and via track 091° to LIZZI WP and hold.

ATIS <b>126.975</b>	ALLENTOWN APP CON <b>119.65 397.9</b>	ALLENTOWN TOWER <b>120.5 257.95</b>	GND CON <b>121.9 257.95</b>	CLNC DEL <b>124.05 257.95</b>
------------------------	--	--	--------------------------------	----------------------------------

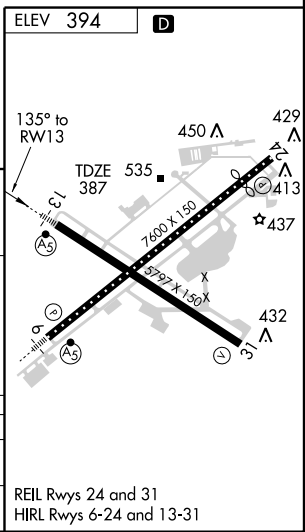
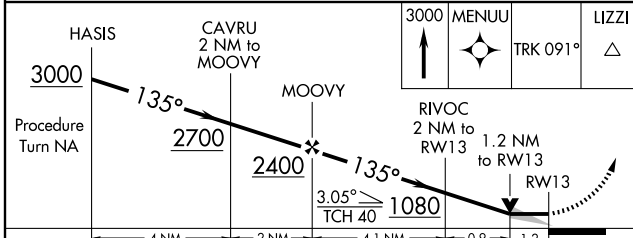


NE-4, 22 OCT 2009 to 19 NOV 2009

NE-4, 22 OCT 2009 to 19 NOV 2009



Procedure NA for arrival on ARD VOR/DME airway radials 265 CW 304.



CATEGORY	A	B	C	D
LNAV MDA	800-1/2 413 (500-1/2)	413 (500-1/2)	800-3/4 413 (500-3/4)	800-1 413 (500-1)
CIRCLING	840-1 446 (500-1)	860-1 466 (500-1)	880-1 1/2 486 (500-1 1/2)	980-2 586 (600-2)

REIL Rwy 24 and 31  
 HIRL Rwy 6-24 and 13-31