

# RNAV (GPS) RWY 31

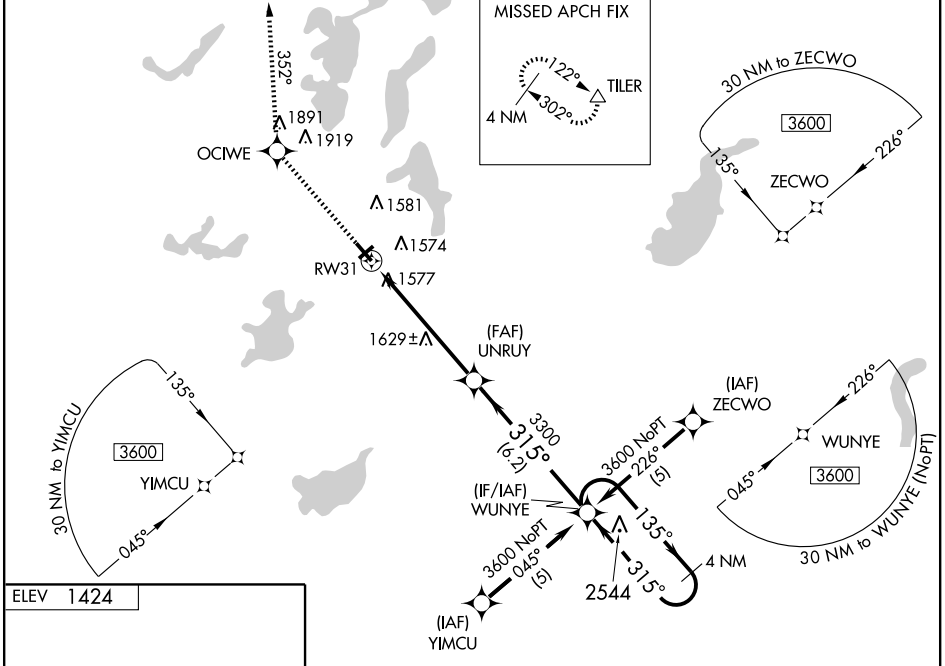
ALEXANDRIA/ CHANDLER FIELD (AXN)

WAAS CH <b>61007</b> <b>W31A</b>	APP CRS <b>315°</b>	Rwy Idg TDZE <b>1423</b> Apt Elev <b>1424</b>	<b>5100</b>
--	------------------------	---	-------------

**⚠** Inoperative table does not apply to LPV & LNAV/VNAV Cats A/B/C and LNAV Cat C. For uncompensated Baro-VNAV systems, LNAV/VNAV NA below -17°C (2°F) or above 46°C (114°F). DME/DME RNP -0.3 NA. VDP and Baro-VNAV NA when using Glenwood altimeter setting. When local altimeter setting not received, use Glenwood altimeter setting and increase all DAs/MDAs 40 feet and increase LPV and LNAV/VNAV visibilities ½ mile all Cats.

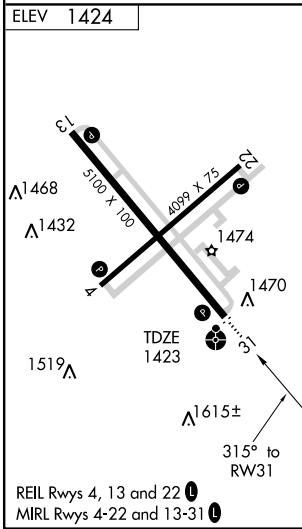
**ODALS**  
 MISSED APPROACH: Climb to 3500 direct OCIWE and via 352° track to TILER and hold.

ASOS <b>118.375</b>	MINNEAPOLIS CENTER <b>126.1 269.2</b>	UNICOM <b>123.0 (CTAF)</b>
------------------------	--	-------------------------------



NC-1, 22 OCT 2009 to 19 NOV 2009

NC-1, 22 OCT 2009 to 19 NOV 2009



3500	OCIWE	track 352°	TILER	WUNYE	4 NM Holding Pattern
*LNAV only			UNRUJ		
		*1.3 NM to RW31			
		1.3 NM	4.4 NM	6.2 NM	
CATEGORY	A	B	C	D	
LPV DA		1815-1¼	392 (400-1¼)		
LNAV/VNAV DA		1885-1½	462 (500-1½)		
LNAV MDA	1880-¾	457 (500-¾)	1880-1¼ 457 (500-1¼)	1880-1½ 457 (500-1½)	
CIRCLING	1920-1	496 (500-1)	1920-1½ 496 (500-1½)	1980-2 556 (600-2)	