

# RNAV (GPS) RWY 36

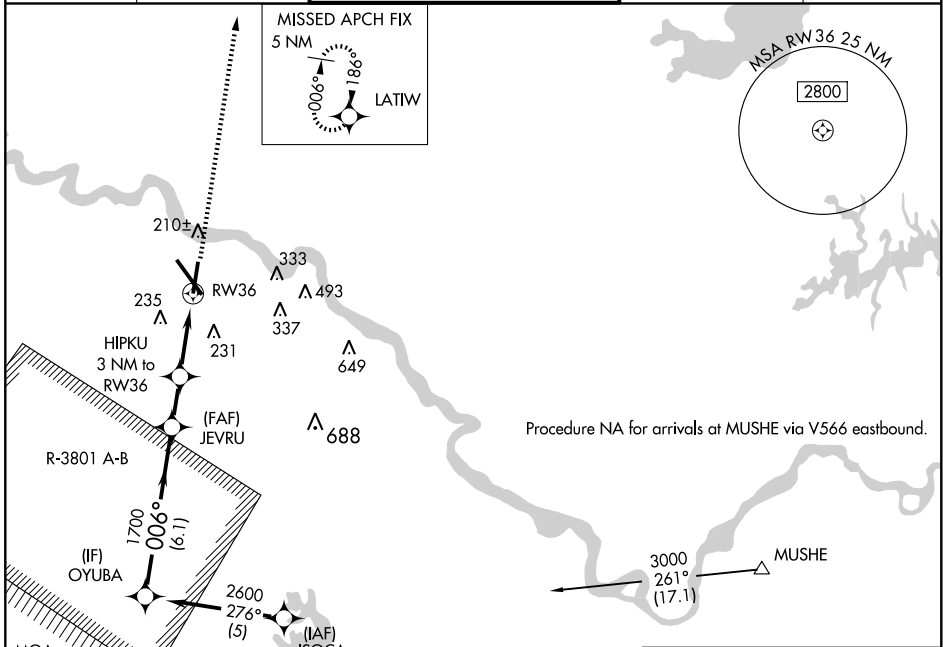
ALEXANDRIA INTL (AEX)

WAAS CH <b>58100</b> <b>W36A</b>	APP CRS <b>006°</b>	Rwy Idg <b>7001</b> TDZE <b>87</b> Apt Elev <b>89</b>
--	------------------------	---

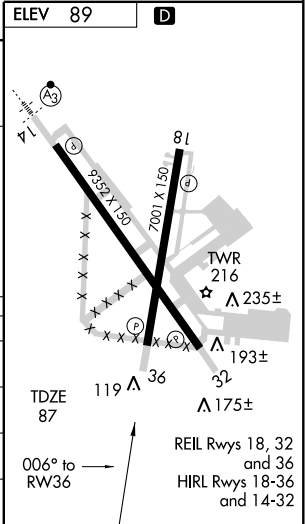
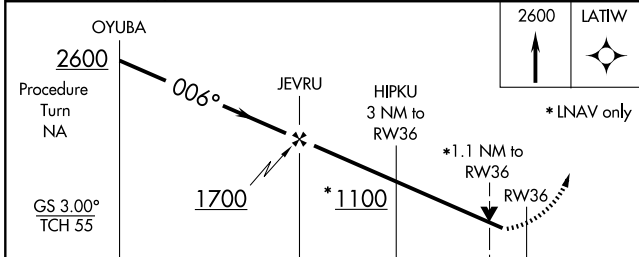
**▼** DME/DME RNP-0.3 NA. Radar required when R-3801 A-B in use. For uncompensated BARO-VNAV systems, LNAV/VNAV NA below -15°C (5°F) or above 48°C (119°F). Visibility reduction by helicopters NA.

MISSED APPROACH: Climb to 2600 direct LATW and hold.

ASOS <b>123.975</b>	POLK APP CON <b>125.4 302.2</b>	ALEXANDRIA TOWER <b>127.35</b> (CTAF) <b>269.2</b>	GND CON <b>121.9 372.0</b>	CLNC DEL <b>121.9</b>
------------------------	------------------------------------	---	-------------------------------	--------------------------



ELEV 89	<b>D</b>
---------	----------



CATEGORY	A	B	C	D
LPV DA	391-1 304 (400-1)			
LNAV/VNAV DA	425-1¼ 338 (400-1¼)			
LNAV MDA	500-1 413 (500-1)	500-1¼ 413 (500-1¼)		
CIRCLING	540-1¼ 451 (500-1¼)	560-1¼ 471 (500-1¼)	560-1½ 471 (500-1½)	640-2 551 (600-2)

SC-4, 22 OCT 2009 to 19 NOV 2009

SC-4, 22 OCT 2009 to 19 NOV 2009