

ALEXANDRIA, LOUISIANA

LOC I-ERJ <b>110.1</b>	APP CRS <b>141°</b>	Rwy Idg <b>9352</b> TDZE <b>85</b> Apt Elev <b>89</b>
---------------------------	------------------------	---

AL-13 (FAA)

# ILS or LOC RWY 14

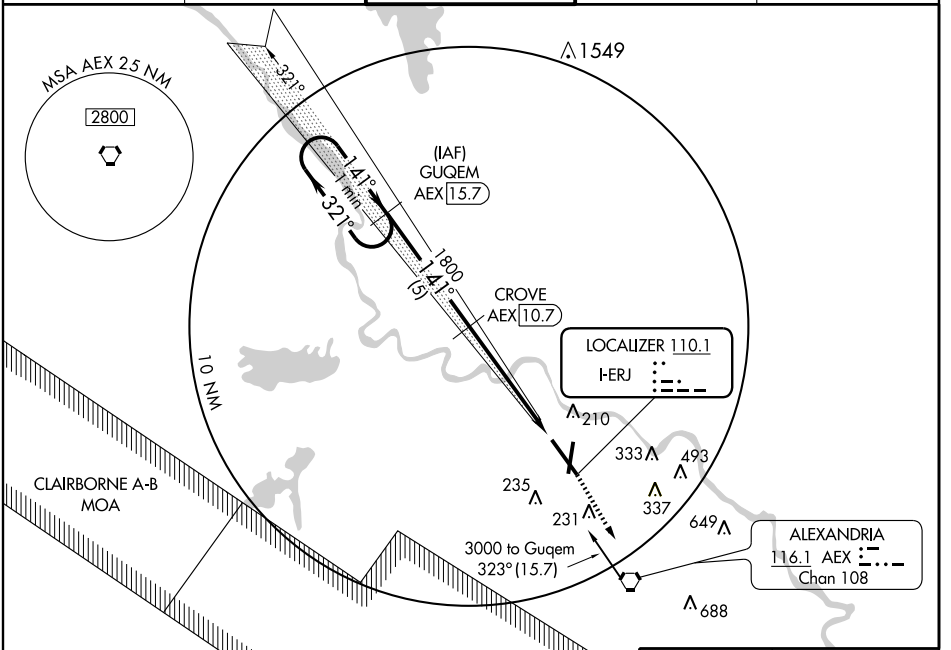
ALEXANDRIA INTL (AEX)

**▼** DME from AEX VORTAC, simultaneous reception of I-ERJ and AEX DME required.  
When R-3801 B active, Radar and DME required.

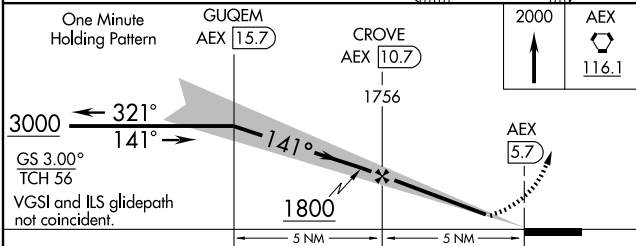
SSALR 

MISSED APPROACH: Climb to 2000 direct AEX VORTAC.

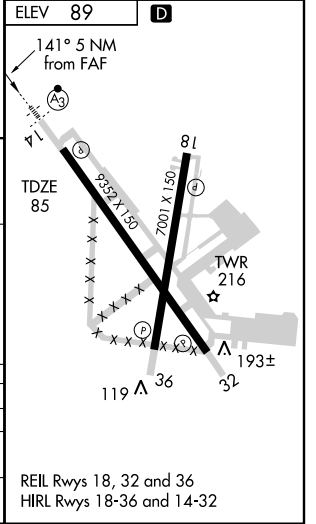
ASOS <b>123.975</b>	POLK APP CON <b>125.4 302.2</b>	ALEXANDRIA TOWER <b>127.35</b> (CTAF) <b>269.2</b>	GND CON <b>121.9 372.0</b>	CLNC DEL <b>121.9</b>
------------------------	------------------------------------	---	-------------------------------	--------------------------



**DME REQUIRED**



CATEGORY	A	B	C	D
S-ILS 14		285-½	200 (200-½)	
S-LOC 14		460-½	375 (400-½)	460-¾ 375 (400-¾)
CIRCLING	540-1 451 (500-1)	560-1 471 (500-1)	560-1½ 471 (500-1½)	640-2 551 (600-2)



ALEXANDRIA, LOUISIANA  
Orig-B 08325

31°20'N-92°33'W

# ALEXANDRIA INTL (AEX)

## ILS or LOC RWY 14

SC-4, 22 OCT 2009 to 19 NOV 2009

SC-4, 22 OCT 2009 to 19 NOV 2009

REIL Rwy 18, 32 and 36  
HIRL Rwy 18-36 and 14-32