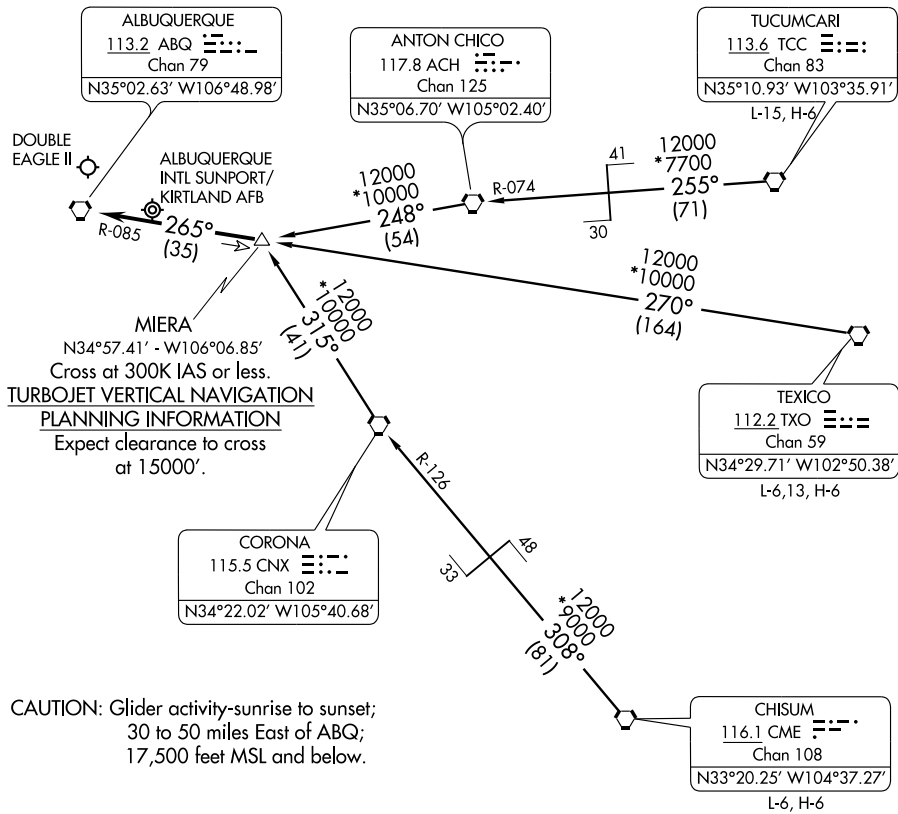


MIERA TWO ARRIVAL

ST-12 (FAA)

ALBUQUERQUE, NEW MEXICO

ALBUQUERQUE APP CON
123.9 354.1
ATIS
118.0 257.7



MIERA
N34°57.41' - W106°06.85'
Cross at 300K IAS or less.
TURBOJET VERTICAL NAVIGATION
PLANNING INFORMATION
Expect clearance to cross
at 15000\''.

CAUTION: Glider activity-sunrise to sunset;
30 to 50 miles East of ABQ;
17,500 feet MSL and below.

NOTE: Chart not to scale.

CHISUM TRANSITION (CME.MIERA2): From over CME VORTAC via CME R-308 and CNX R-126 to CNX VORTAC, then via CNX R-315 to MIERA DME fix. Thence....

TEXICO TRANSITION (TXO.MIERA2): From over TXO VORTAC via TXO R-270 and ABQ R-085 to MIERA DME fix. Thence....

TUCUMCARI TRANSITION (TCC.MIERA2): From over TCC VORTAC via TCC R-255 and ACH R-074 to ACH VORTAC, then via ACH R-248 to MIERA DME fix. Thence....

....From over MIERA DME fix via ABQ R-085 to ABQ VORTAC. Expect vectors to final approach course after passing MIERA DME fix.

SW-1, 22 OCT 2009 to 19 NOV 2009

SW-1, 22 OCT 2009 to 19 NOV 2009

MIERA TWO ARRIVAL

ALBUQUERQUE, NEW MEXICO