

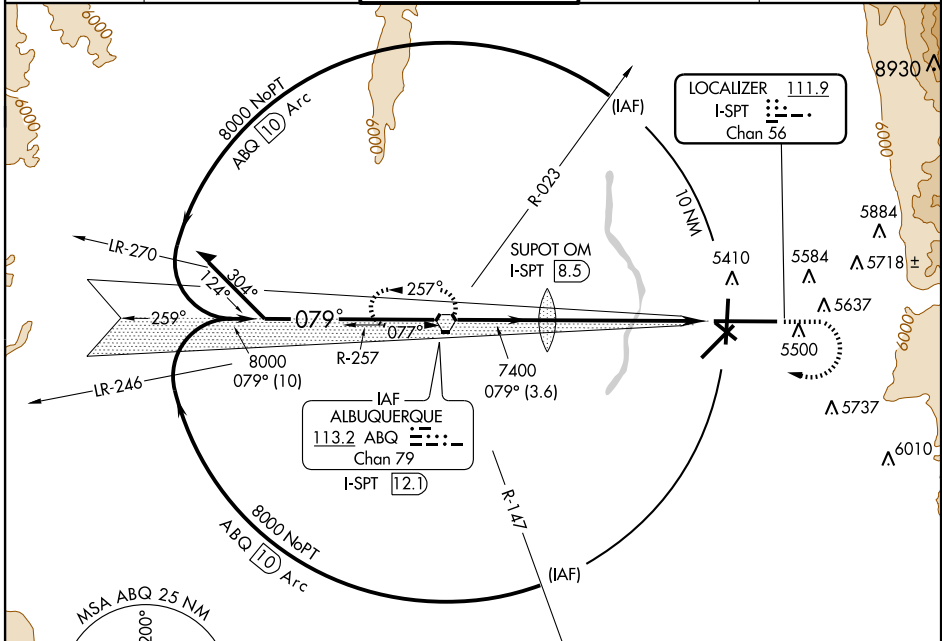
LOC/DME I-SPT <b>111.9</b> Chan 56	APP CRS <b>079°</b>	Rwy Idg <b>12793</b> TDZE <b>5317</b> Apt Elev <b>5355</b>
--	------------------------	--

# ILS or LOC RWY 8

ALBUQUERQUE INTL SUNPORT (ABQ)

<p><b>▼</b> For inoperative MALS, increase Cat D S-LOC 8 visibility to RVR 5000.</p> <p>ASR</p>	<p>MALS</p>	<p>MISSED APPROACH: Climb to 5800 then climbing right turn to 8000 direct ABQ VORTAC and hold.</p>
---	-------------	--

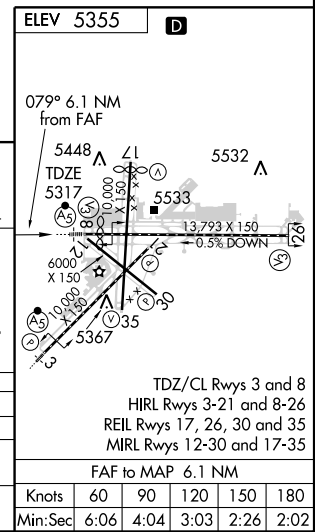
<p>ATIS <b>118.0 257.7</b></p>	<p>ALBUQUERQUE APP CON <b>123.9 354.1</b></p>	<p>ALBUQUERQUE TOWER <b>120.3 351.9</b></p>	<p>GND CON <b>121.9 348.6</b></p>	<p>CLNC DEL <b>119.2 259.3</b></p>
------------------------------------	---	---	---------------------------------------	--



SW-1, 22 OCT 2009 to 19 NOV 2009

SW-1, 22 OCT 2009 to 19 NOV 2009

<p>Remain within 10 NM</p> <p>VORTAC I-SPT 12.1</p> <p>8000 079°</p> <p>Use I-SPT DME when on LOC course.</p>	<p>SUPOT OM I-SPT 8.5</p> <p>7352</p> <p>7400</p> <p>3.6 NM</p>	<p>5800</p> <p>8000</p> <p>ABQ 113.2</p>	<p>I-SPT 2.4</p> <p>GS 3.00° TCH 54</p> <p>6.1 NM</p>
---	---	--	---



<p>5800</p> <p>8000</p> <p>079°</p> <p>7400</p> <p>3.6 NM</p> <p>6.1 NM</p>	<p>5800</p> <p>8000</p> <p>ABQ 113.2</p>	<p>I-SPT 2.4</p> <p>GS 3.00° TCH 54</p> <p>6.1 NM</p>		
<p>CATEGORY</p>	<p>A</p>	<p>B</p>	<p>C</p>	<p>D</p>
<p>S-ILS 8</p>	<p>5517/18</p>		<p>200 (200-½)</p>	
<p>S-LOC 8</p>	<p>5640/24</p>		<p>323 (300-½)</p>	
			<p>5640/40</p>	
			<p>323 (300-¾)</p>	
<p>CIRCLING</p>	<p>5840-1 485 (500-1)</p>		<p>5900-1½</p>	
			<p>545 (600-1½)</p>	
			<p>5940-2</p>	
			<p>585 (600-2)</p>	