

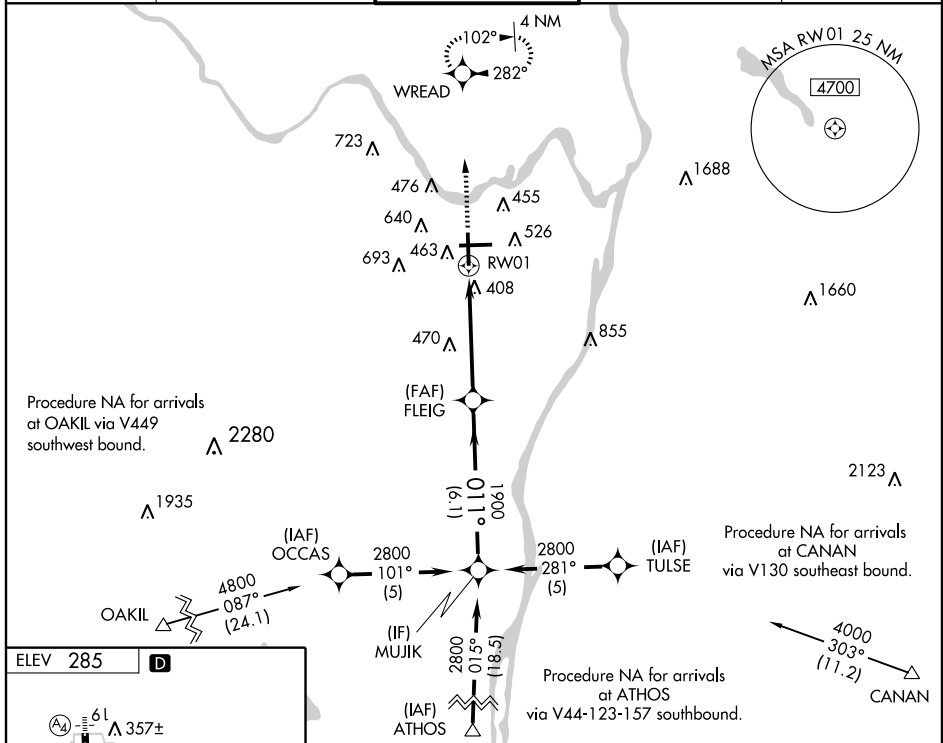
RNAV (GPS) RWY 1

ALBANY INTL (ALB)

WAAS CH 97402 W01A	APP CRS 011°	Rwy Idg 8500 TDZE 285 Apt Elev 285
---------------------------------	------------------------	---

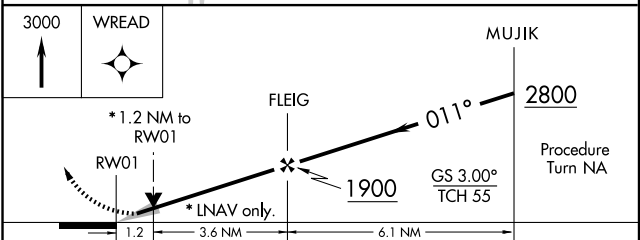
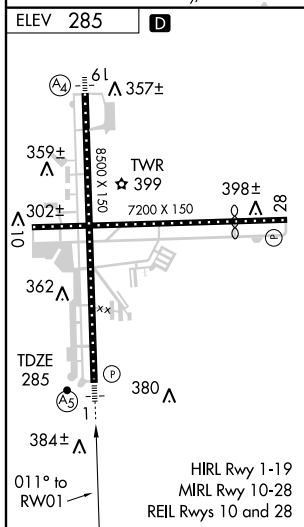
<p>▼ Circling NA west of Rwy 1-19. For inoperative MALSR, increase LPV all Cats visibility to RVR 4000. For uncompensated Baro-VNAV systems, LNAV/VNAV NA below -1.5°C (5°F) or above 48°C (119°F). DME/DME RNP-0.3 NA.</p>	<p>MALSR</p>	<p>MISSED APPROACH: Climb to 3000 direct WREAD and hold, continue climb-in-hold to 3000.</p>
--	---------------------	---

ATIS 120.45	ALBANY APP CON 132.825 307.2	ALBANY TOWER 119.5 257.8	GND CON 121.7 348.6	CLNC DEL 127.50
-----------------------	--	------------------------------------	-------------------------------	---------------------------



NE-2, 22 OCT 2009 to 19 NOV 2009

NE-2, 22 OCT 2009 to 19 NOV 2009



CATEGORY	A	B	C	D
LPV DA		535/24	250 (300-½)	
LNAV/VNAV DA		818/60	533 (600-1¼)	
LNAV MDA	720/24	435 (500-½)	720/40 435 (500-¾)	720/50 435 (500-1)
CIRCLING	840-1¾ 555 (600-1¾)			840-2 555 (600-2)