

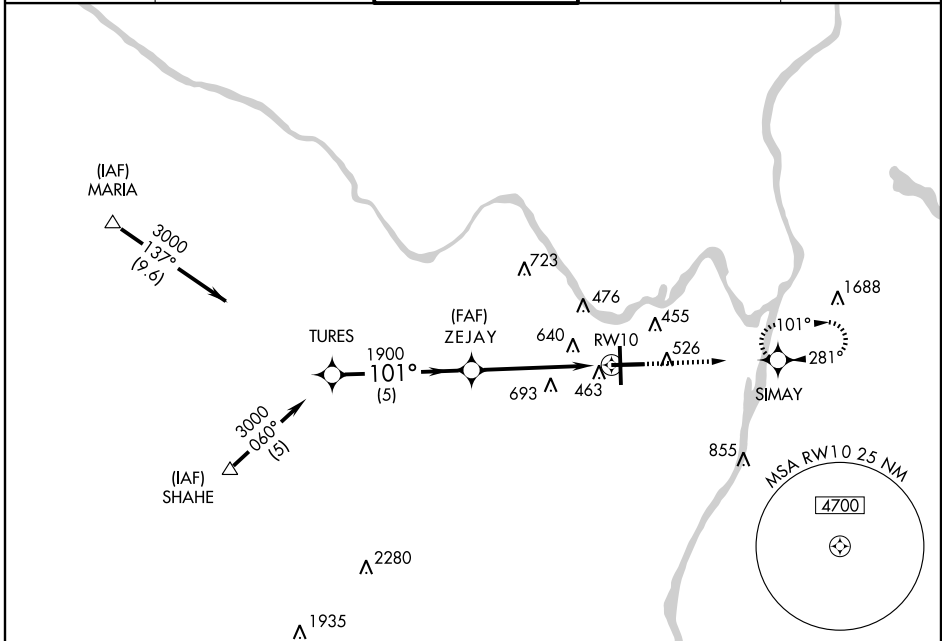
GPS RWY 10

ALBANY INTL (ALB)

APP CRS 101°	Rwy Idg 6780
	TDZE 280
	Apt Elev 285

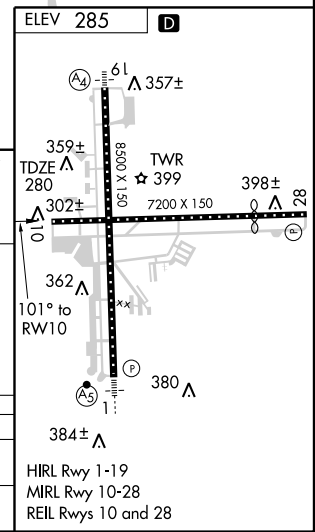
Circling NA West of Rwy 1-19. NA	MISSED APPROACH: Climb to 3200 direct SIMAY WP and hold.
-------------------------------------	--

ATIS 120.45	ALBANY APP CON 132.825 307.2	ALBANY TOWER 119.5 257.8	GND CON 121.7 348.6	CLNC DEL 127.50
-----------------------	--	------------------------------------	-------------------------------	---------------------------



NE-2, 22 OCT 2009 to 19 NOV 2009

NE-2, 22 OCT 2009 to 19 NOV 2009



	TURES		ZEJAY		RW10	
	3000		1900		3200	
	101°		2.96°		SIMAY	
	5 NM		5 NM		TCH 50	

CATEGORY	A	B	C	D
S-10	920-1 640 (700-1)		920-1¾ 640 (700-1¾)	920-2 640 (700-2)
CIRCLING	920-1 635 (700-1)		920-1¾ 635 (700-1¾)	920-2 635 (700-2)