

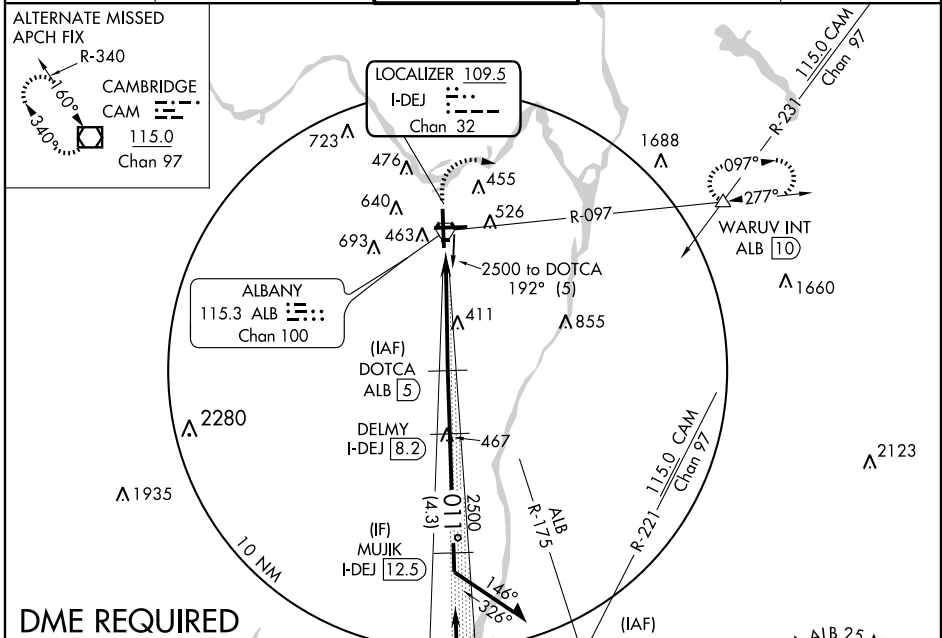
# COPTER ILS or LOC/DME RWY 1

ALBANY INTL (ALB)

LOC/DME I-DEJ <b>109.5</b> Chan 32	APP CRS <b>011°</b>	Rwy Idg TDZE Apt Elev	<b>8500</b> <b>285</b> <b>285</b>
--	------------------------	-----------------------------	---

▲ NA	MALSR 	MISSED APPROACH: Climb to 800 then climbing right turn to 5000 via ALB VORTAC R-097 to WARUV Int/ALB 10 DME and hold, continue climb-in-hold to 5000.
------	-----------	---

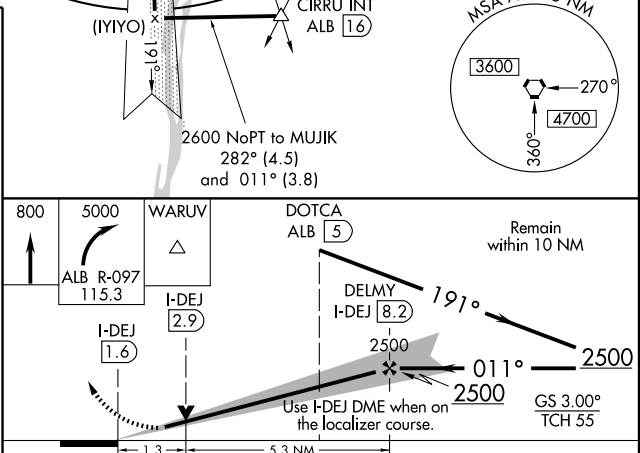
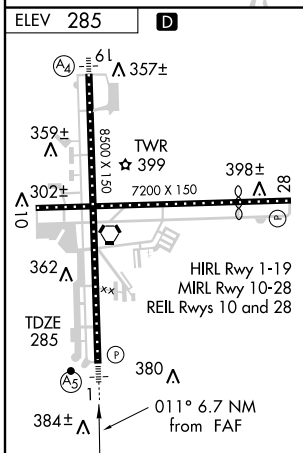
ATIS <b>120.45</b>	ALBANY APP CON <b>132.825 307.2</b>	ALBANY TOWER <b>119.5 257.8</b>	GND CON <b>121.7 348.6</b>	CLNC DEL <b>127.50</b>
-----------------------	--	------------------------------------	-------------------------------	---------------------------



NE-2, 22 OCT 2009 to 19 NOV 2009

NE-2, 22 OCT 2009 to 19 NOV 2009

## DME REQUIRED



FAF to MAP 6.7 NM					CATEGORY	COPTER	
Knots	45	60	75	90	H-ILS 1	485/12 200 (200-¼)	
Min:Sec	8:56	6:42	5:22	4:28	H-LOC 1	760/12 475 (500-¼)	

# COPTER ILS or LOC/DME RWY 1