

ALBANY, GEORGIA

AL-8 (FAA)

# RNAV (GPS) RWY 4

ALBANY/ SOUTHWEST GEORGIA RGNL (ABY)

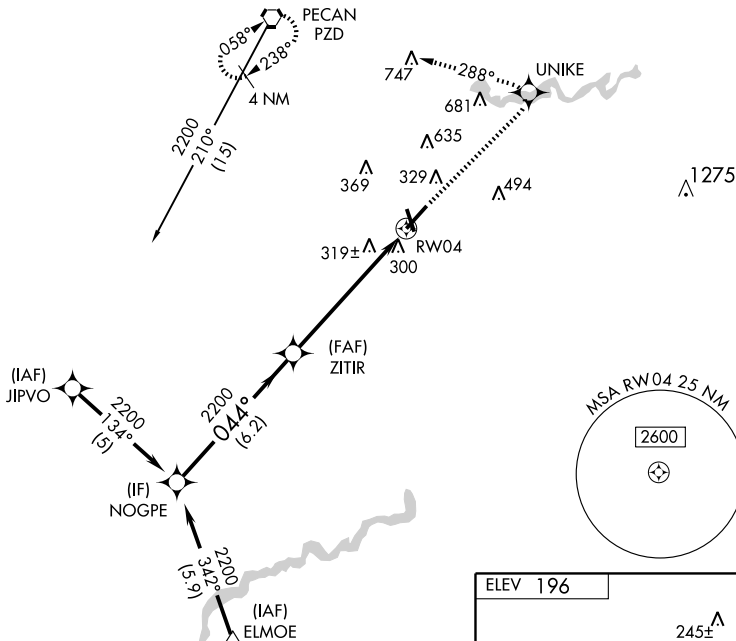
WAAS CH <b>78000</b> <b>W04A</b>	APP CRS <b>044°</b>	Rwy Idg TDZE <b>196</b> Apt Elev <b>196</b>	<b>6601</b>
--	------------------------	---	-------------

**⚠** For uncompensated Baro-VNAV systems, LNAV/VNAV NA below -15°C (5°F) or above 48°C (118°F). DME/DME RNP-0.3 NA. For inoperative MALS R increase LNAV Cat D visibility to RVR 6000.

**MALS** MISSED APPROACH: Climb to 2000 direct UNIKE and left turn via track 288° to PZD VORTAC and hold.

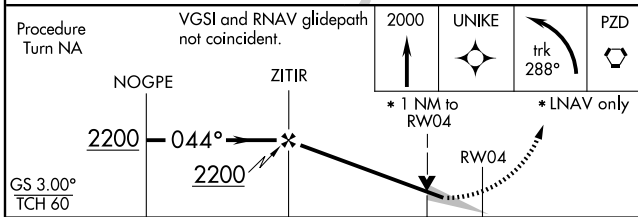
ATIS <b>133.05</b>	JACKSONVILLE CENTER <b>125.75 226.8</b>	ALBANY TOWER * <b>120.25 (CTAF) 0336.4</b>	GND CON <b>121.9 348.6</b>	UNICOM <b>122.95</b>
-----------------------	--	---	-------------------------------	-------------------------

Procedure NA for arrivals at PZD VORTAC via V35-159 northbound.

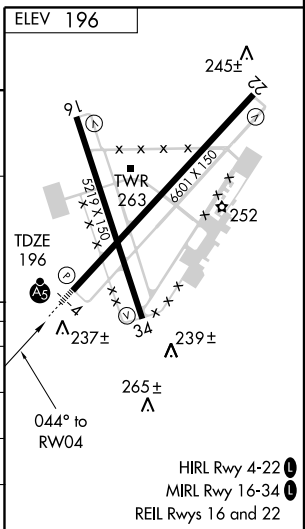


SE-4, 22 OCT 2009 to 19 NOV 2009

SE-4, 22 OCT 2009 to 19 NOV 2009



CATEGORY	A	B	C	D
LPV DA		396/24	200 (200-1/2)	
LNAV/VNAV DA		635/50	439 (500-1)	
LNAV MDA	580/24	384 (400-1/2)		580/50 384 (400-1)
CIRCLING	640-1 444 (500-1)	660-1 464 (500-1)	660-1 1/2 464 (500-1 1/2)	940-2 1/2 744 (800-2 1/2)



ALBANY, GEORGIA  
Amdt 1 09239

ALBANY/ SOUTHWEST GEORGIA RGNL (ABY)  
31°32'N-84°12'W

# RNAV (GPS) RWY 4