

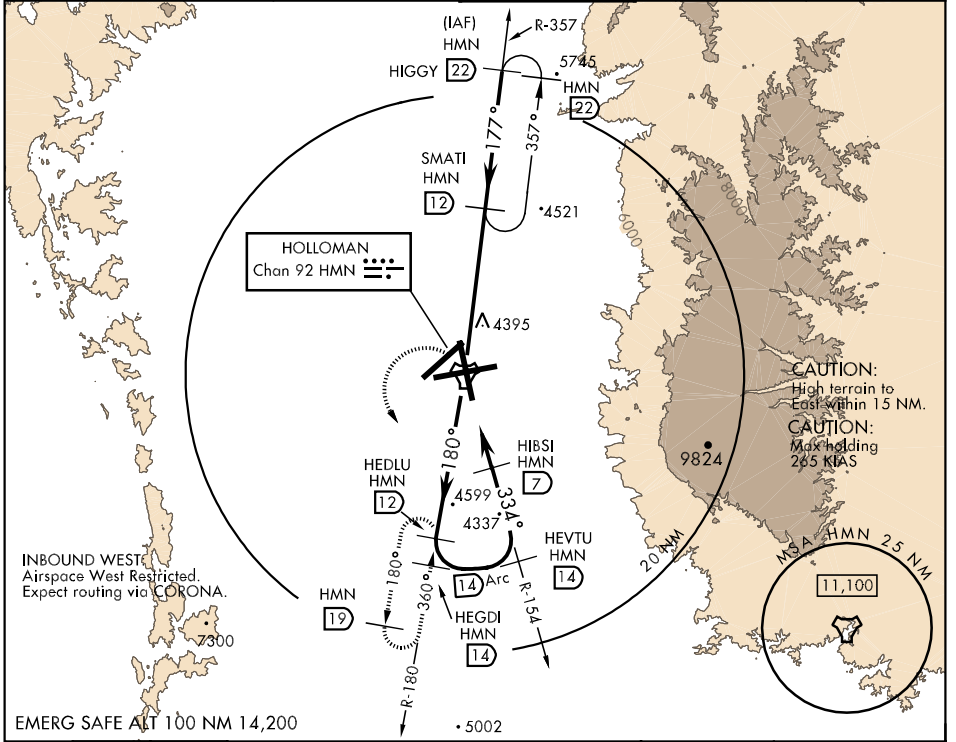
TACAN HMN Chan <b>92</b>	APCH CRS <b>334°</b>	Rwy Ldg TDZE <b>12,131</b> <b>4058</b> Arpt Elev <b>4093</b>
-----------------------------	-------------------------	--

AL-7 [USAF]

HOLLOMAN AFB (KHMN)

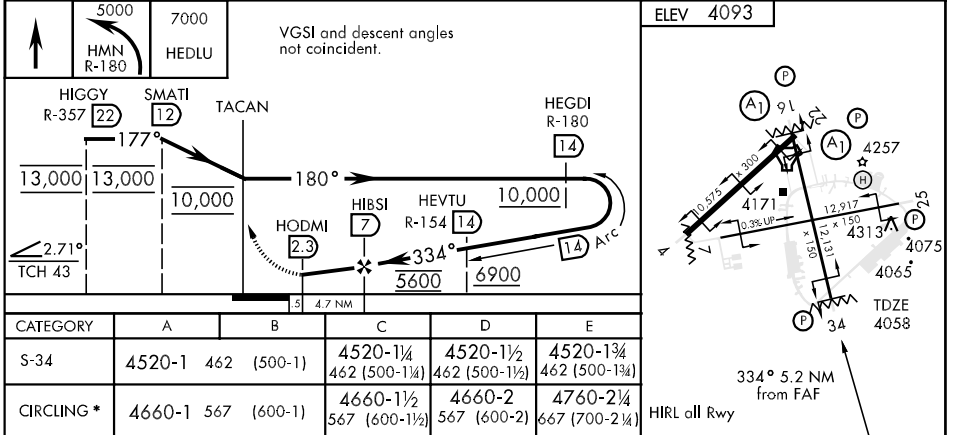
**▼** \* Circling not authorized West of Rwy 16-34. MISSED APPROACH: Climb straight ahead to 7000, passing 5000 turn left and intercept HMN R-180 outbound to HEDLU and hold.

ATIS ★ <b>273.5</b>	ALBUQUERQUE CENTER <b>132.65 257.6</b>	HOLLOMAN APP CON <b>120.6 269.225</b>	HOLLOMAN TOWER ★ <b>119.3 255.9</b>	GND CON <b>127.05 275.8</b>	CLNC DEL <b>126.7 289.4</b>
------------------------	---	--	--	--------------------------------	--------------------------------



SW-1, 22 OCT 2009 to 19 NOV 2009

SW-1, 22 OCT 2009 to 19 NOV 2009



CATEGORY	A	B	C	D	E
S-34	4520-1 462 (500-1)	4520-1½ 462 (500-1¼)	4520-1½ 462 (500-1½)	4520-1½ 462 (500-1½)	4520-1¾ 462 (500-1¾)
CIRCLING *	4660-1 567 (600-1)	4660-1½ 567 (600-1½)	4660-2 567 (600-2)	4660-2 567 (600-2)	4760-2¼ 667 (700-2¼)