

TACAN HMN Chan 92	APCH CRS 214°	Rwy ldg TDZE 4084 Arpt Elev 4093
----------------------	------------------	--

JAL-7 [USAF]

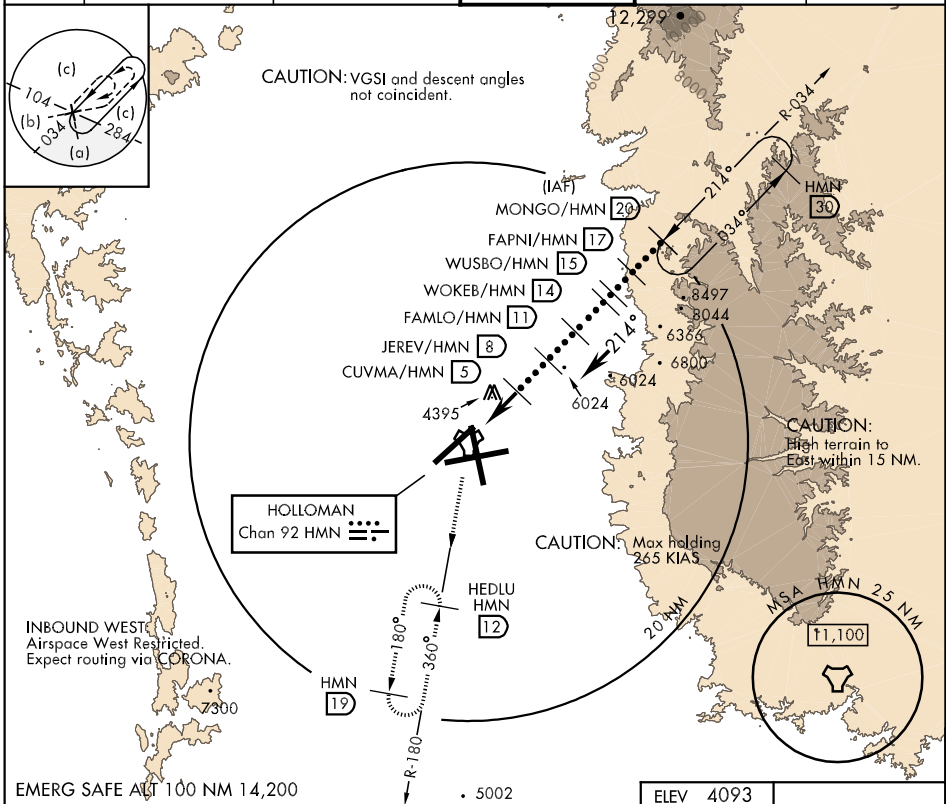
HOLLOMAN AFB (KHMN)

▼ \* When ALS inop, increase CAT C vis to 1¼ mile, CAT D vis to 2 miles, CAT E vis to 2½ miles.  
 \*\* Circling not authorized West of Rwy 16-34.



MISSED APPROACH: Climb straight ahead to 7000, passing 4800 turn left and intercept HMN R-180 outbound to HEDLU and hold.

ATIS ★ 273.5	ALBUQUERQUE CENTER 132.65 257.6	HOLLOMAN APP CON 120.6 269.225	HOLLOMAN TOWER ★ 119.3 255.9	GND CON 127.05 275.8	CLNC DEL 126.7 289.4
-----------------	------------------------------------	-----------------------------------	---------------------------------	-------------------------	-------------------------



SW-1, 22 OCT 2009 to 19 NOV 2009

SW-1, 22 OCT 2009 to 19 NOV 2009

