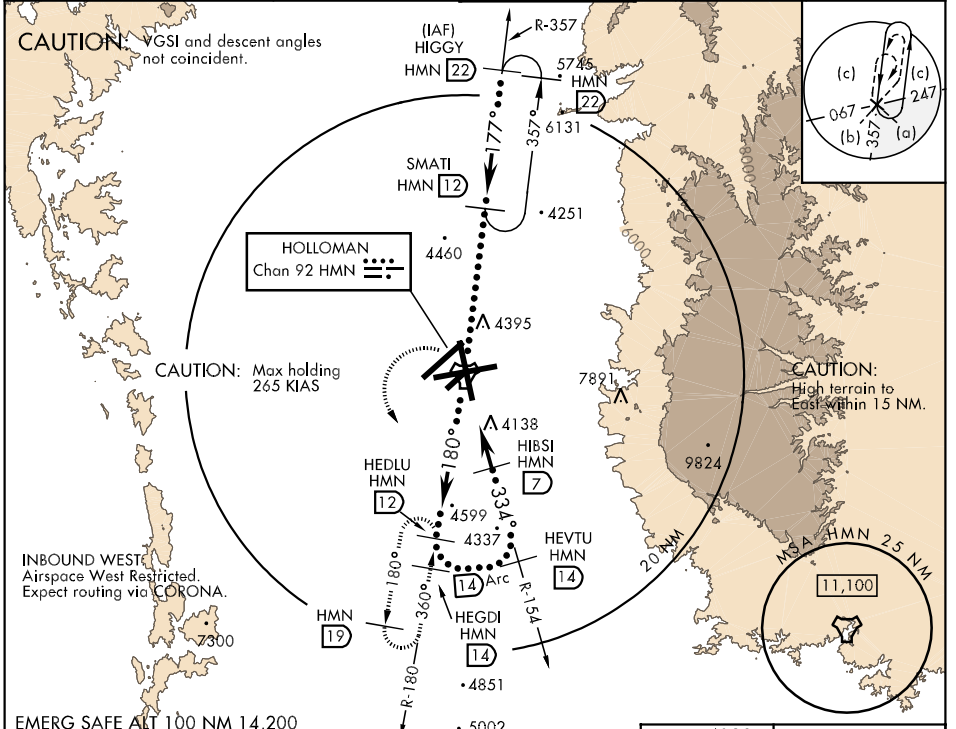


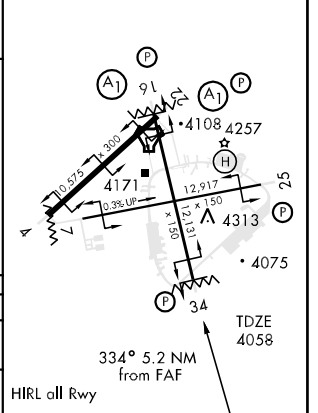
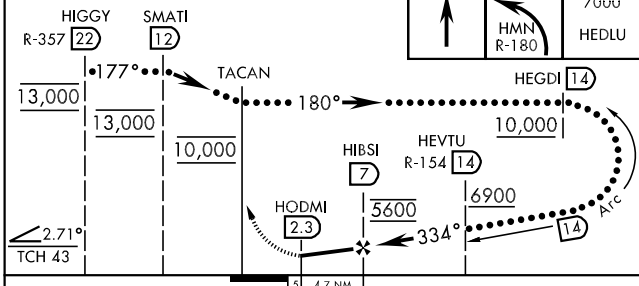
TACAN HMN Chan <b>92</b>	APCH CRS <b>334°</b>	Rwy Idg <b>12,131</b> TDZE <b>4058</b> Arpt Elev <b>4093</b>	JAL-7 [USAF]	HOLLOMAN AFB (KHMM)
-----------------------------	-------------------------	--	--------------	---------------------

▼ \* Circling not authorized West of Rwy 16-34.
 
 MISSED APPROACH: Climbing to 7000 fly straight ahead. Upon reaching 5000 turn left to intercept HMN R-180 outbound to HEDLU and hold.

ATIS * <b>273.5</b>	ALBUQUERQUE CENTER <b>132.65 257.6</b>	HOLLOMAN APP CON <b>120.6 269.225</b>	HOLLOMAN TOWER * <b>119.3 255.9</b>	GND CON <b>127.05 275.8</b>	CLNC DEL <b>126.7 289.4</b>
------------------------	---	--	--	--------------------------------	--------------------------------



ELEV 4093
-----------



CATEGORY	C	D	E
S-34	4520-1¼ 462 (500-1¼)	4520-1½ 462 (500-1½)	4520-1¾ 462 (500-1¾)
CIRCLING *	4660-1½ 567 (600-1½)	4660-2 567 (600-2)	4760-2¼ 667 (700-2¼)

SW-1, 22 OCT 2009 to 19 NOV 2009

SW-1, 22 OCT 2009 to 19 NOV 2009