

TACAN HMN Chan 92	APCH CRS 162°	Rwy Idg TDZE Arpt Elev 12,131 4083 4093
-----------------------------	-------------------------	---

JAL-7 [USAF]

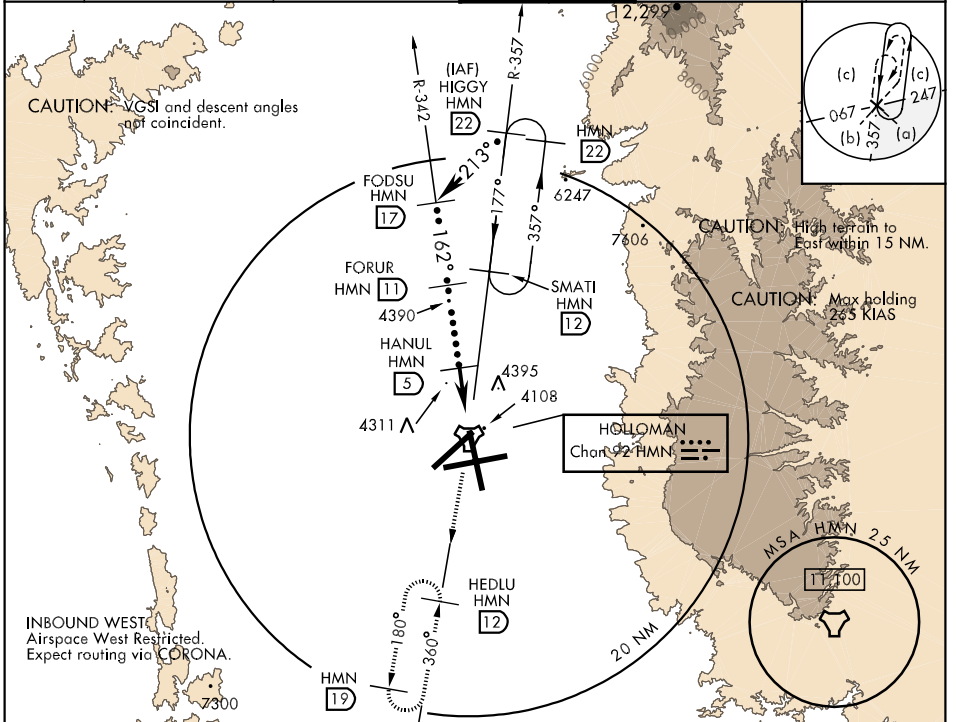
HOLLOMAN AFB (KHMN)

▼ *When ALS inop, increase CAT C vis to 1¼ miles, CAT D vis to 2 miles, CAT E vis to 2¼ miles.
** Circling not authorized West of Rwy 16-34.



MISSED APPROACH: Climb straight ahead to 7000, passing 4800 turn right and intercept HMN R-180 outbound to HEDLU and hold.

ATIS ★ 273.5	ALBUQUERQUE CENTER 132.65 257.6	HOLLOMAN APP CON 120.6 269.225	HOLLOMAN TOWER ★ 119.3 255.9	GND CON 127.05 275.8	CLNC DEL 126.7 289.4
------------------------	---	--	--	--------------------------------	--------------------------------



SW-1, 22 OCT 2009 to 19 NOV 2009

	HIGGY R-357 (22)	FODSU R-342 (17)	FORUR (11)	HANUL (5)	TACAN	JEKRA (8)
	13,000	9000	7400	5600	4800	7000
	213°		162°		4.2 NM	
	2.93° TCH 41				.5 NM	
CATEGORY	C		D		E	
S-16 *	4700-1¼ 617 (700-1¼)		4700-1½ 617 (700-1½)		4700-1¾ 617 (700-1¾)	
CIRCLING **	4700-1¾ 607 (700-1¾)		4700-2 607 (700-2)		4760-2¼ 667 (700-2¼)	

