

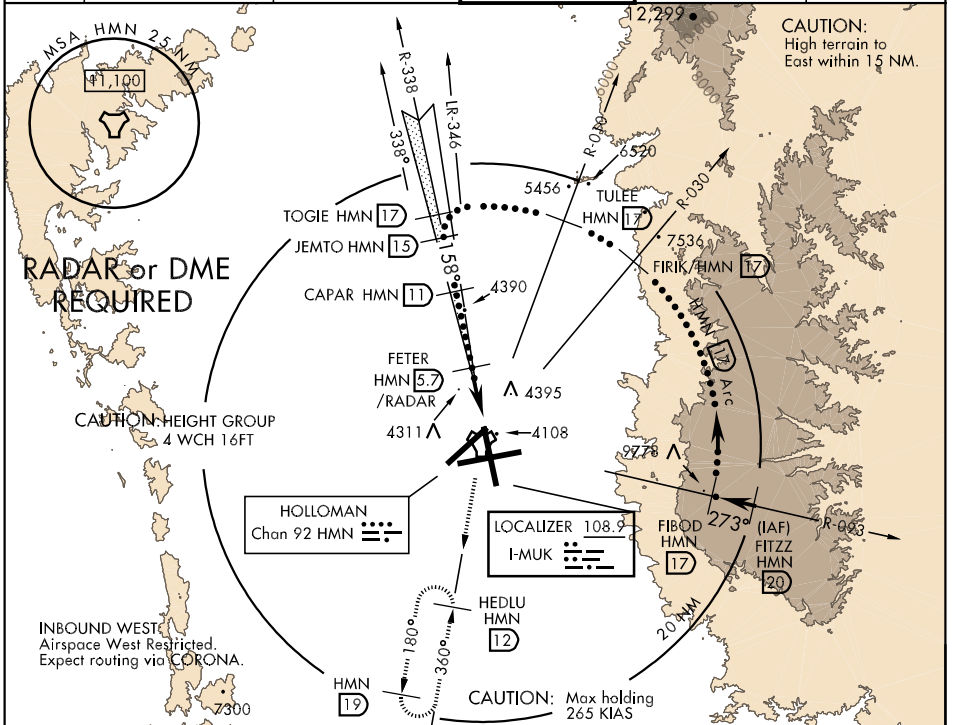
LOC I-MUK 108.9	APCH CRS 158°	Rwy Idg 12,131 TDZE 4083 Arpt Elev 4093	JAL-7 [USAF]	HOLLOMAN AFB (KHMN)
---------------------------	-------------------------	---	--------------	---------------------

▼ * When ALS inop, increase CAT CDE vis to 3/4 mile.
 ** When ALS inop, increase CAT C vis to 1 1/4 miles, CAT D vis to 1 1/2 miles, CAT E vis to 1 3/4 miles.
 *** Circling not authorized West of Rwy 16-34.

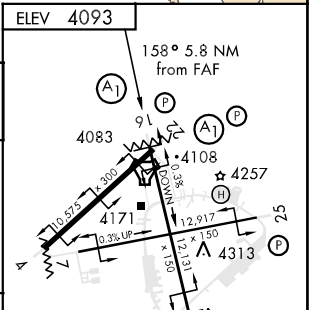
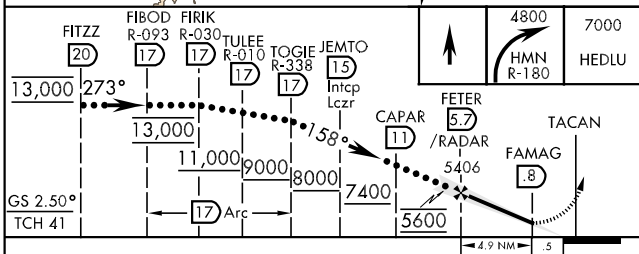
ALSF-1

MISSED APPROACH: Climb straight ahead to 7000, passing 4800 turn right and intercept HMN R-180 outbound to HEDLU and hold.

ATIS ★ 273.5	ALBUQUERQUE CENTER 132.65 257.6	HOLLOMAN APP CON 120.6 269.225	HOLLOMAN TOWER ★ 119.3 255.9	GND CON 127.05 275.8	CLNC DEL 126.7 289.4
------------------------	---	--	--	--------------------------------	--------------------------------



EMERG SAFE ALT 100 NM 14,200



CATEGORY	C	D	E
S-ILS 16 *	4283-1/2	200 (200-1/2)	
S-LOC 16 **	4580-3/4 497 (500-3/4)	4580-1 497 (500-1)	4580-1 1/4 497 (500-1 1/4)
CIRCLING ***	4660-1 1/2 567 (600-1 1/2)	4660-2 567 (600-2)	4760-2 1/4 667 (700-2 1/4)

HIRL all Rwy

FAF to MAP 4.9 NM					
Knots	120	140	160	180	200
Min:Sec	2:27	2:06	1:50	1:38	1:28

SW-1, 22 OCT 2009 to 19 NOV 2009

SW-1, 22 OCT 2009 to 19 NOV 2009