

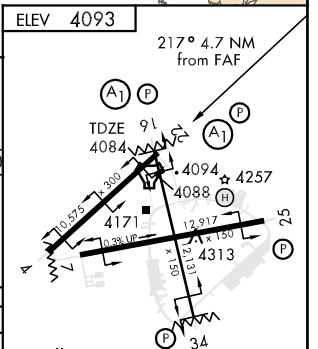
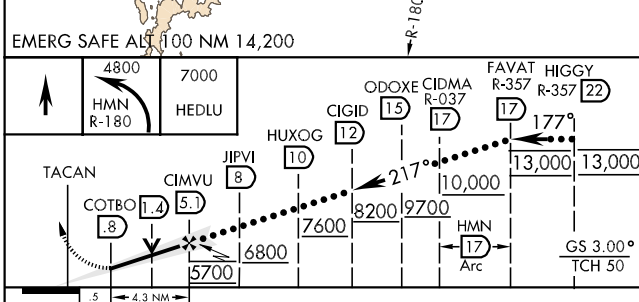
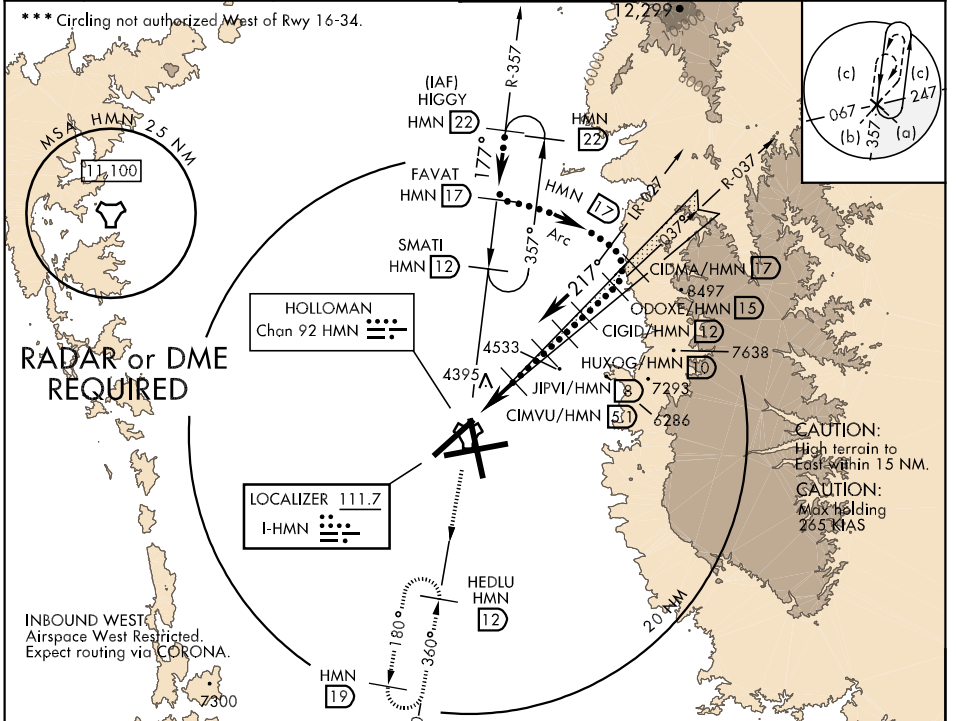
LOC I-HMN <b>111.7</b>	APCH CRS <b>217°</b>	Rwy Idg <b>10,575</b> TDZE <b>4084</b> Arpt Elev <b>4093</b>	JAL-7 [USAF]	HOLLOMAN AFB (KHMM)
---------------------------	-------------------------	--	--------------	---------------------

▼ \* When ALS inop, increase CAT CDE vis to ¾ mile.  
 \*\* When ALS inop, increase CAT C vis to 1½ miles, CAT D vis to 1¾ miles, CAT E vis to 2 miles.



**MISSED APPROACH:** Climb straight ahead to 7000, passing 4800 turn left and intercept HMN R-180 outbound to HEDLU and hold.

ATIS * <b>273.5</b>	ALBUQUERQUE CENTER <b>132.65 257.6</b>	HOLLOMAN APP CON <b>120.6 269.225</b>	HOLLOMAN TOWER * <b>119.3 255.9</b>	GND CON <b>127.05 275.8</b>	CLNC DEL <b>126.7 289.4</b>
------------------------	---	--	--	--------------------------------	--------------------------------



CATEGORY	C	D	E
S-ILS 22 *	4284-½ 200 (200-½)		
S-LOC 22 **	4660-1 576 (600-1)	4660-1¼ 576 (600-1¼)	4660-1½ 576 (600-1½)
CIRCLING ***	4660-1½ 567 (600-1½)	4660-2 567 (600-2)	4760-2¼ 667 (700-2¼)

HIRL all Rwy					
FAF to MAP 4.3 NM					
Knots	120	140	160	180	200
Min:Sec	2:09	1:51	1:37	1:26	1:17

SW-1, 22 OCT 2009 to 19 NOV 2009

SW-1, 22 OCT 2009 to 19 NOV 2009