

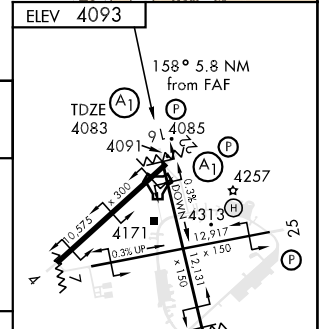
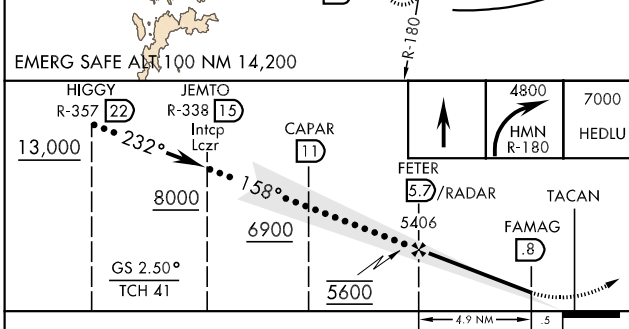
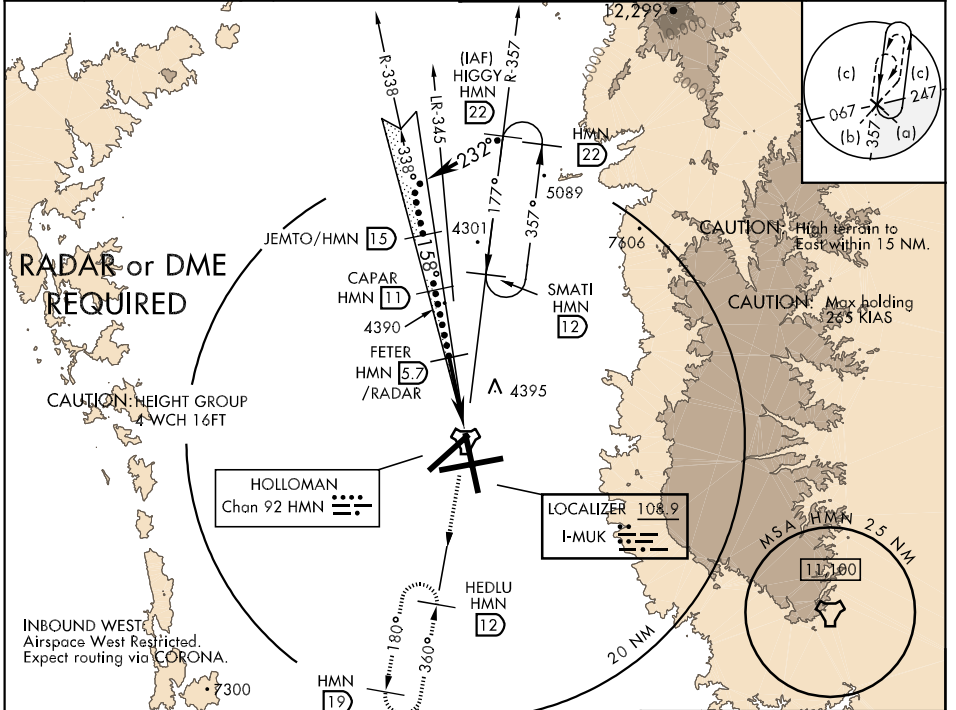
LOC I-MUK 108.9	APCH CRS 158°	Rwy Idg TDZE Arpt Elev 12,131 4083 4093	JAL-7 [USAF]	HOLLOMAN AFB (KHMN)
---------------------------	-------------------------	-----------------------------------------------------------------------------	--------------	---------------------

* When ALS inop, increase CAT CDE vis to ¾ mile.
 ** When ALS inop, increase CAT C vis to 1¼ miles, CAT D vis to 1½ miles, CAT E vis to 1¾ miles.
 *** Circling not authorized West of Rwy 16-34.

ALSF-1

MISSED APPROACH: Climb straight ahead to 7000, passing 4800 turn right and intercept HMN R-180 outbound to HEDLU and hold.

ATIS ★ 273.5	ALBUQUERQUE CENTER 132.65 257.6	HOLLOMAN APP CON 120.6 269.225	HOLLOMAN TOWER ★ 119.3 255.9	GND CON 127.05 275.8	CLNC DEL 126.7 289.4
------------------------	-------------------------------------------	------------------------------------------	----------------------------------------	--------------------------------	--------------------------------



CATEGORY	C	D	E
S-ILS 16*	4283-½	200 (200-½)	
S-LOC 16**	4580-¾ 497 (500-¾)	4580-1 497 (500-1)	4580-1¼ 497 (500-1¼)
CIRCLING***	4660-1½ 567 (600-1½)	4660-2 567 (600-2)	4760-2¼ 667 (700-2¼)

HIRL all Rwy

FAF to MAP 4.9 NM					
Knots	120	140	160	180	200
Min:Sec	2:27	2:06	1:50	1:38	1:28

SW-1, 22 OCT 2009 to 19 NOV 2009

SW-1, 22 OCT 2009 to 19 NOV 2009