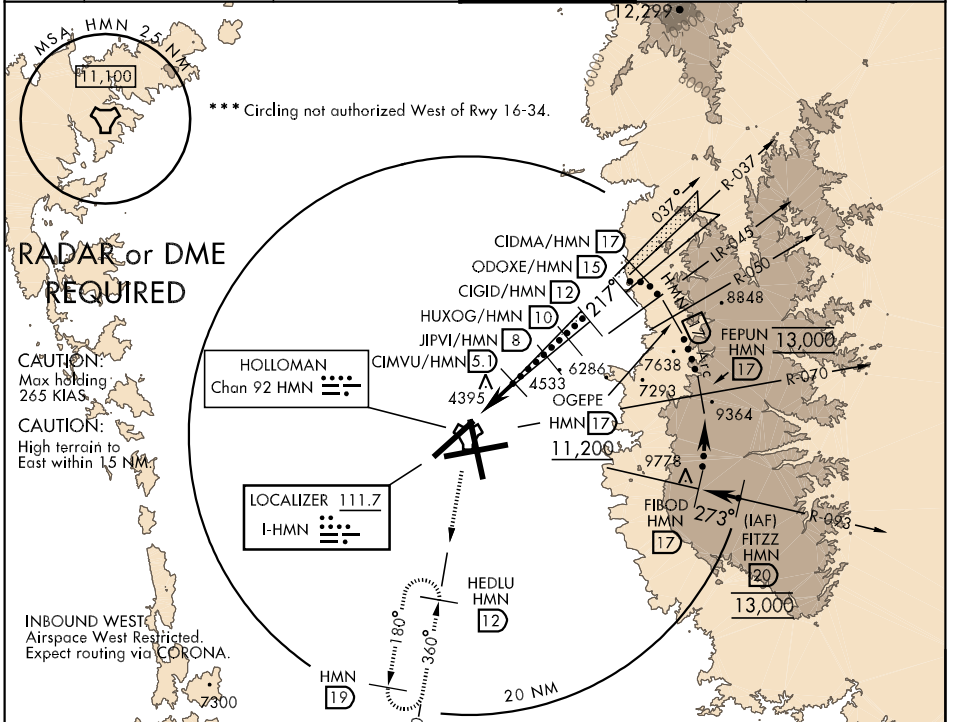


LOC I-HMN 111.7	APCH CRS 217°	Rwy Idg 10,575 TDZE 4084 Arpt Elev 4093	JAL-7 [USAF]	HOLLOMAN AFB (KHMN)
* When ALS inop, increase CAT CDE vis to 3/4 mile. ** When ALS inop, increase CAT C vis to 1 1/2 miles, CAT D vis to 1 3/4 miles, CAT E vis to 2 miles.			ALSF-1	MISSED APPROACH: Climb straight ahead to 7000, passing 4800 turn left and intercept HMN R-180 outbound to HEDLU and hold.

ATIS * 273.5	ALBUQUERQUE CENTER 132.65 257.6	HOLLOMAN APP CON 120.6 269.225	HOLLOMAN TOWER * 119.3 255.9	GND CON 127.05 275.8	CLNC DEL 126.7 289.4
------------------------	---	--	--	--------------------------------	--------------------------------



SW-1, 22 OCT 2009 to 19 NOV 2009

SW-1, 22 OCT 2009 to 19 NOV 2009