

AKRON, OHIO

AL-6 (FAA)

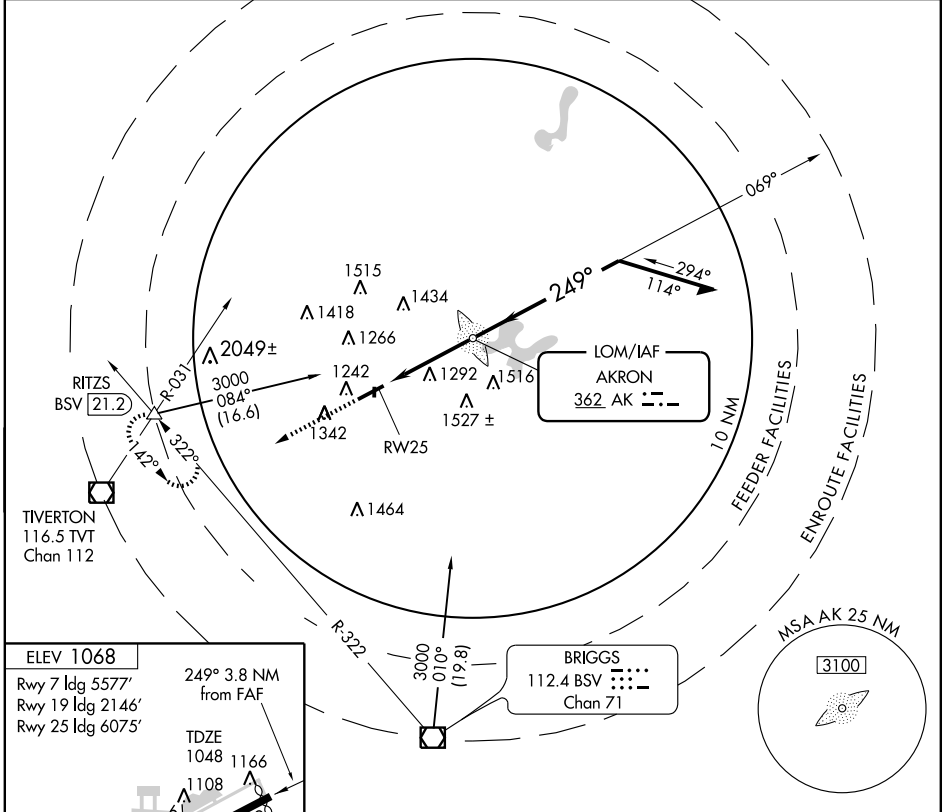
NDB or GPS RWY 25

AKRON FULTON INTL (AKR)

LOM AK 362	APP CRS 249°	Rwy ldg TDZE Apt Elev	6075 1048 1068
----------------------	------------------------	-----------------------------	---

<p>▼</p> <p>▲ NA</p>	<p>MISSED APPROACH: Climb to 3000 via heading 249° and BSV R-322 to RITZS Int and hold.</p>
----------------------	---

ASOS 126.825	AKRON-CANTON APP CON ★ 118.6 371.875	CLNC DEL 121.6	UNICOM 123.075 (CTAF) 0
------------------------	--	--------------------------	--



EC-2, 22 OCT 2009 to 19 NOV 2009

EC-2, 22 OCT 2009 to 19 NOV 2009

ELEV 1068

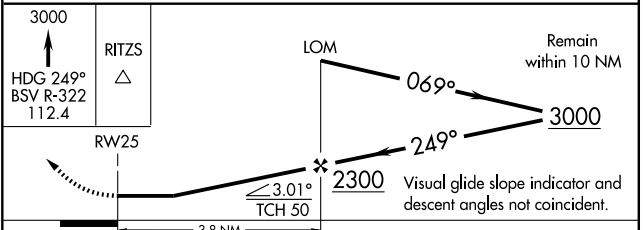
Rwy 7 ldg 5577'
Rwy 19 ldg 2146'
Rwy 25 ldg 6075'

249° 3.8 NM from FAF

TDZE 1048 1166
1108

1093
637 X 150
2336 X 100
1269
1224
1196

REIL Rwy 7 and 25
MIRL Rwy 1-19
HIRL Rwy 7-25



FAF to MAP 3.8 NM

Knots	60	90	120	150	180
Min:Sec	3:48	2:32	1:54	1:31	1:16

CATEGORY	A	B	C	D
S-25	1640-1	592 (600-1)	1640-1½ 592 (600-1½)	1640-1¾ 592 (600-1¾)
CIRCLING	1640-1 572 (600-1)	1700-1 632 (700-1)	1700-1¾ 632 (700-1¾)	1700-2 632 (700-2)

AKRON, OHIO
Amdt 13A 07242

41°02'N · 81°28'W

NDB or GPS RWY 25