

ABILENE, TEXAS

# VOR/DME RWY 34

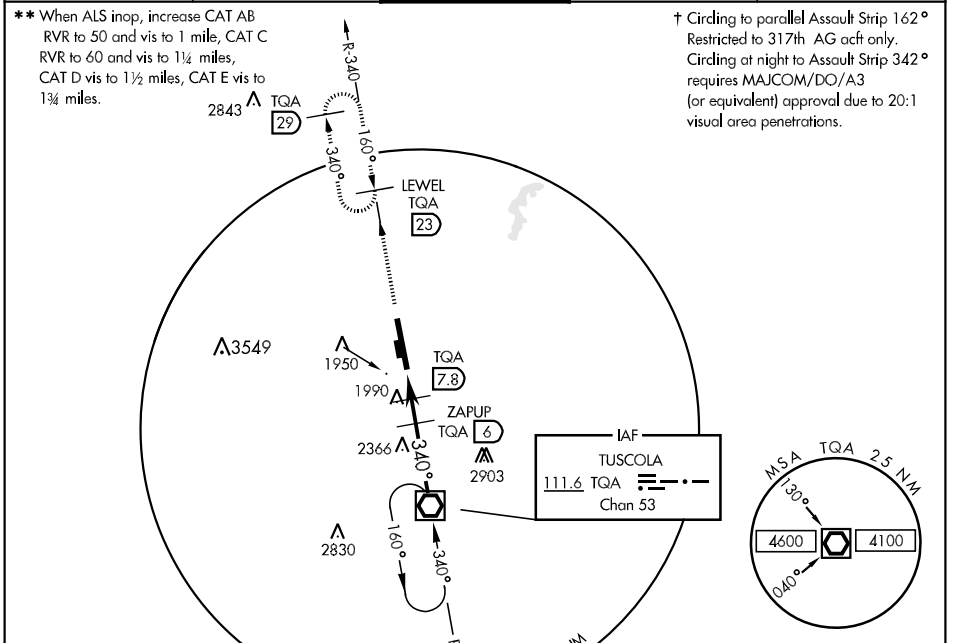
VOR/DME TQA <b>111.6</b> Chan <b>53</b>	APCH CRS <b>340°</b>	Rwy Idg <b>13,500</b> TDZE <b>1787</b> Arpt Elev <b>1789</b>
---	-------------------------	--

AL-2 [USAF]

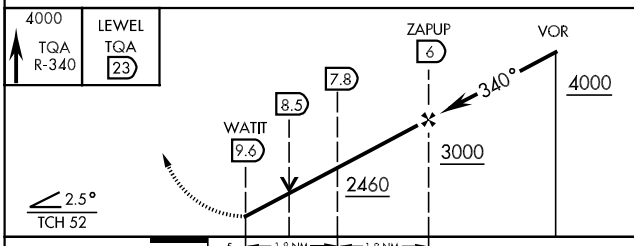
DYESS AFB (KDYS)

<p>▼ * When ALS inop, increase CAT AB RVR to 50 and vis to 1 mile, CAT C RVR to 60 and vis to 1 ¼ miles, CAT D vis to 1 ½ miles, CAT E vis to 1 ¾ miles.</p>	<p>ALSF-1 (A1)</p>	<p>MISSED APPROACH: Climb to 4000 via TQA VOR/DME R-340 to LEWEL and hold.</p>
--	------------------------	--

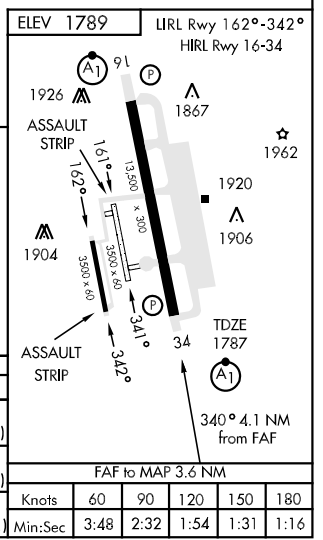
<p>ATIS ★ <b>385.7</b></p>	<p>ABILENE APP CON <b>125.0 338.3 EAST</b> <b>127.2 282.3 WEST</b></p>	<p>DYESS TOWER <b>133.0 257.675</b></p>	<p>GND CON <b>118.35 275.8</b></p>	<p>ASR</p>
--------------------------------	--	---	--	------------



EMERG SAFE ALT 100 NM 4600



CATEGORY	A	B	C	D	E
S-34 *	2260/24	473 (500-½)	2260/40 473 (500-¾)	2260/50 473 (500-1)	2260/60 473 (500-1 ¼)
CIRCLING †	2340-1	551 (600-1)	2340-1 ½ 551 (600-1 ½)	2360-2 571 (600-2)	2460-2 ½ 671 (700-2 ½)
S-ASR 34 **	2260/24	473 (500-½)	2260/40 473 (500-¾)	2260/50 473 (500-1)	2260/60 473 (500-1 ¼)



ABILENE, TEXAS  
Amdt 1 08297

32°25'-99°51'W

DYESS AFB (KDYS)

# VOR/DME RWY 34

SC-2, 22 OCT 2009 to 19 NOV 2009

SC-2, 22 OCT 2009 to 19 NOV 2009