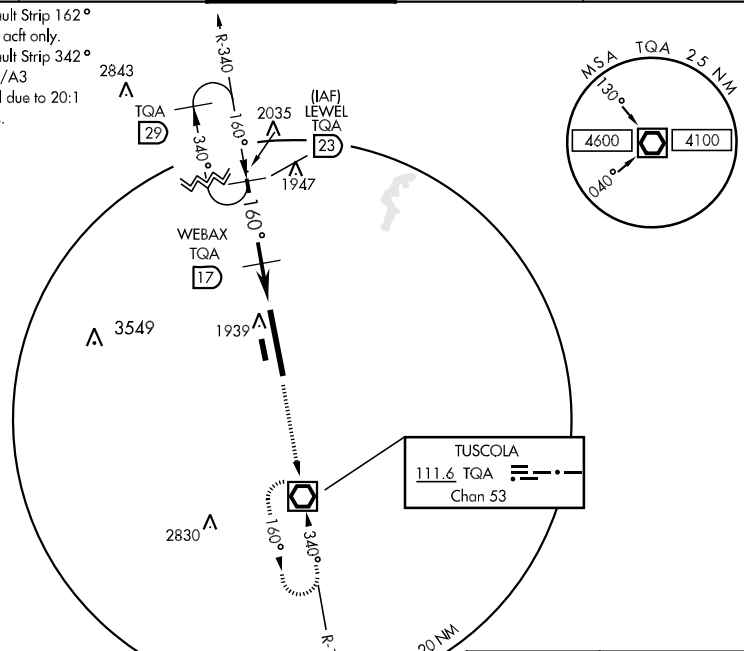


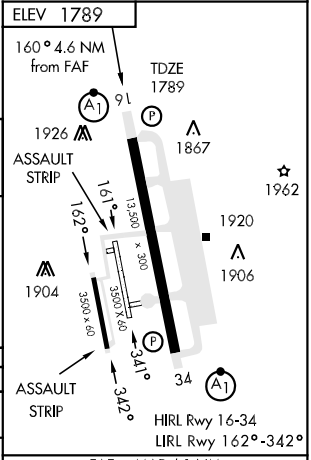
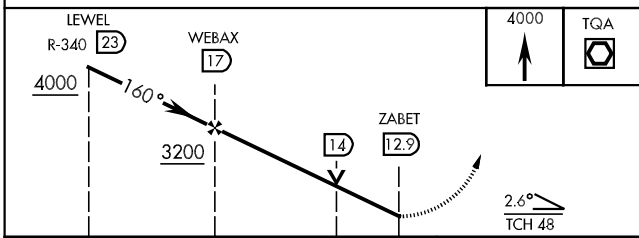
| | | | | |
|---|-------------------------|--|--------------|---|
| VOR/DME TQA 111.6 Chan 53 | APCH CRS 160° | Rwy Idg 13,500 TDZE 1789 Arpt Elev 1789 | AL-2 [USAF] | DYESS AFB (KDYS) |
| ▼ * When ALS inop, increase CAT AB RVR to 50 and vis to 1 mile, CAT CD vis to 1½ miles, CAT E vis to 1¾ miles. ** When ALS inop, increase CAT AB RVR to 50 and vis to 1 mile, CAT C vis to 1½ miles, CAT DE vis to 1¾ miles. | | | ALSF-1 A1 | MISSED APPROACH: Climb and maintain 4000 proceed direct TQA and hold. |

| | | | | |
|------------------------|---|-------------------------------------|--------------------------------|-----|
| ATIS ★ 385.7 | ABILENE APP CON 125.0 338.3 EAST 127.2 282.3 WEST | DYESS TOWER 133.0 257.675 | GND CON 118.35 275.8 | ASR |
|------------------------|---|-------------------------------------|--------------------------------|-----|

† Circling to parallel Assault Strip 162°
 Restricted to 317th AG acct only.
 Circling at night to Assault Strip 342° requires MAJCOM/DC/A3 (or equivalent) approval due to 20:1 visual area penetrations.



EMERG SAFE ALT 100 NM 4600



| CATEGORY | A | B | C | D | E |
|-------------|------------------------|------------------------|-------------------------|-----------------------|-------------------------|
| S-16 * | 2300/24 | 511 (600-½) | 2300/50 | 511 (600-1) | 2300/60 511 (600-1¼) |
| CIRCLING † | 2340-1 | 551 (600-1) | 2340-1½ 551 (600-1½) | 2360-2 571 (600-2) | 2460-2½ 671 (700-2½) |
| S-ASR 16 ** | 2300/24 511 (600-½) | 2300/40 511 (600-¾) | 2300/50 511 (600-1) | 2300/60 | 511 (600-1¼) |

| FAF to MAP 4.1 NM | | | | | |
|-------------------|------|------|------|------|------|
| Knots | 60 | 90 | 120 | 150 | 180 |
| Min:Sec | 4:06 | 2:24 | 2:03 | 1:38 | 1:22 |

SC-2, 22 OCT 2009 to 19 NOV 2009

SC-2, 22 OCT 2009 to 19 NOV 2009