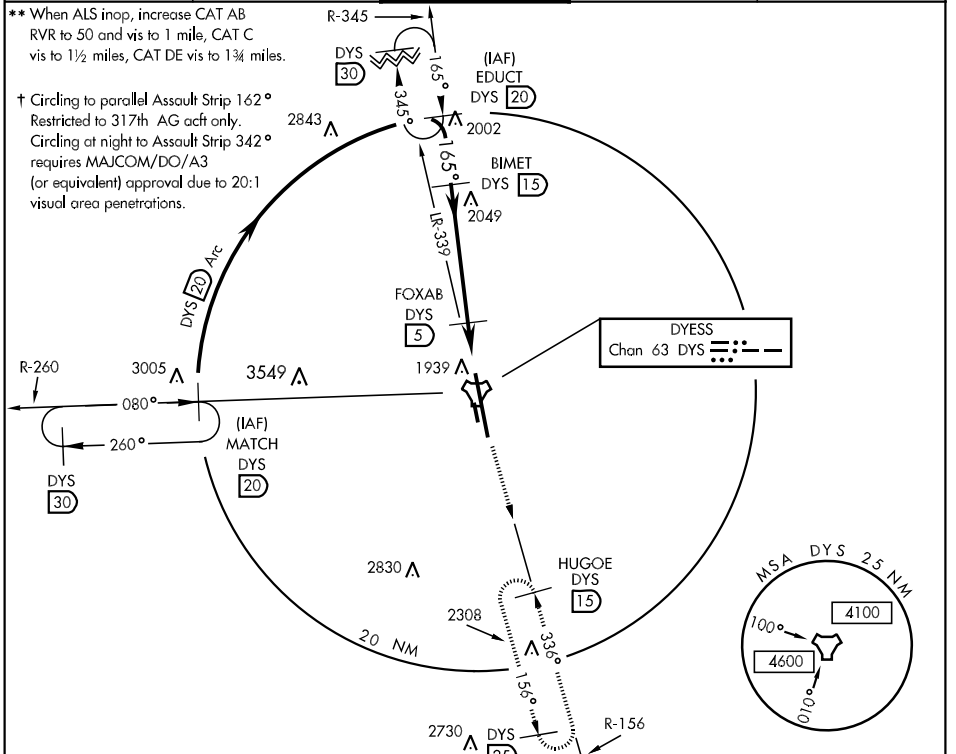


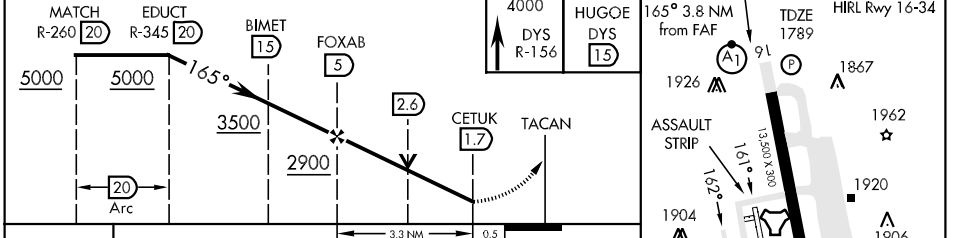
TACAN Chan 63	DYS 165°	APCH CRS 165°	Rwy Idg 13,500 TDZE 1789 Arpt Elev 1789	AL-2 [USAF]	DYESS AFB (KDYS)
-------------------------	--------------------	-------------------------	--	-------------	------------------

▼ * When ALS inop, increase CAT AB RVR to 50 and vis to 1 mile, CAT C RVR to 60 and vis to 1½ miles, CAT DE vis to 1½ miles.
 ALS-F1
(A1)
MISSED APPROACH: Climb to 4000 out
DYS R-156 to HUGOE and hold.

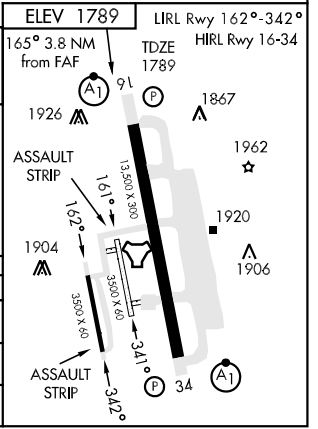
ATIS ★ 385.7	ABILENE APP CON 125.0 338.3 EAST 127.2 282.3 WEST	DYESS TOWER 133.0 257.675	GND CON 118.35 275.8	ASR
------------------------	---	-------------------------------------	--------------------------------	-----



EMERG SAFE ALT 100 NM 4600



CATEGORY	A	B	C	D	E
S-16*	2220/24	431 (500-½)	2220/40 431 (500-¾)	2220/50	431 (500-1)
CIRCLING †	2340-1	551 (600-1)	2340-1½ 551 (600-½)	2360-2 571 (600-2)	2460-2½ 671 (700-2½)
S-ASR 16**	2300/24 511 (600-½)	2300/40 511 (600-¾)	2300/50 511 (600-1)	2300/60	511 (600-1½)



SC-2, 22 OCT 2009 to 19 NOV 2009

SC-2, 22 OCT 2009 to 19 NOV 2009