

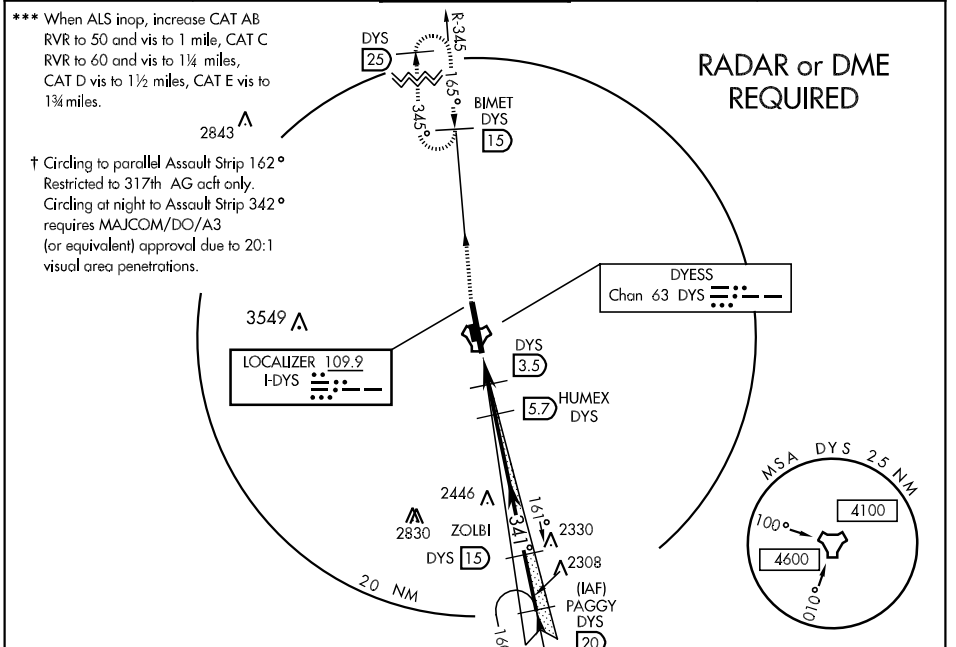
LOC I-DYS 109.9	APCH CRS 341°	Rwy Idg 13,500 TDZE 1787 Arpt Elev 1789
---------------------------	-------------------------	--

AL-2 [USAF]

DYESS AFB (KDYS)

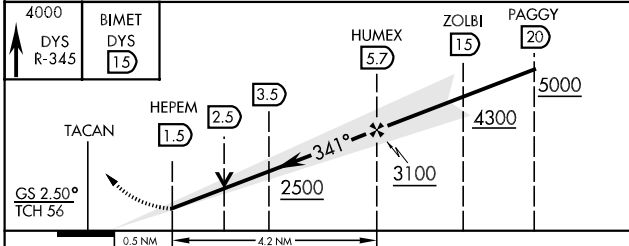
<p>*** When ALS inop, increase RVR to 40 and vis to ¾ mile.</p> <p>** When ALS inop, increase CAT AB RVR to 50 and vis to 1 mile, CAT C RVR to 60 and vis to 1¼, CAT DE vis to 1½ miles.</p>	<p>ALSF-1</p>	<p>MISSED APPROACH: Climb to 4000 via DYS R-345 to BIMET and hold.</p>
--	---------------	--

<p>ATIS ★</p> <p>385.7</p>	<p>ABILENE APP CON</p> <p>125.0 338.3 EAST 127.2 282.3 WEST</p>	<p>DYESS TOWER</p> <p>133.0 257.675</p>	<p>GND CON</p> <p>118.35 275.8</p>	<p>ASR</p>
-----------------------------------	---	--	---	------------

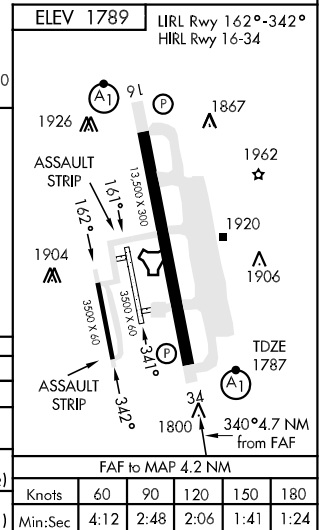


EMERG SAFE ALT 100 NM 4600

4000 DYS R-345	BIMET DYS 15	HUMEX DYS 5.7	ZOLBI DYS 15	PAGGY DYS 20
-------------------	-----------------	------------------	-----------------	-----------------



CATEGORY	A	B	C	D	E
S-ILS 34 *	1987/24 200 (200-½)				
S-LOC 34 **	2240/24	453 (500-½)	2240/40 453 (500-¾)	2240/50	453 (500-1)
CIRCLING †	2340-1	551 (600-1)	2340-1½ 551 (600-1½)	2360-2 571 (600-2)	2460-2½ 671 (700-2½)
S-ASR 34 ***	2260/24	473 (500-½)	2260/40 473 (500-¾)	2260/50 473 (500-1)	2260/60 473 (500-1¼)



SC-2, 22 OCT 2009 to 19 NOV 2009

SC-2, 22 OCT 2009 to 19 NOV 2009