

LOC I-TYY	APCH CRS	Rwy Idg
109.9	161°	13,500
		TDZE
		1789
		Arpt Elev
		1789

AL-2 [USAF]

DYESS AFB (KDYS)

▼ *When ALS inop, increase RVR to 40 and vis to ¼ mile.
▼ **When ALS inop, increase CAT AB RVR to 50 and vis to 1 mile, CAT C RVR to 60 and vis to 1½ miles, CAT DE vis to 1½ miles.



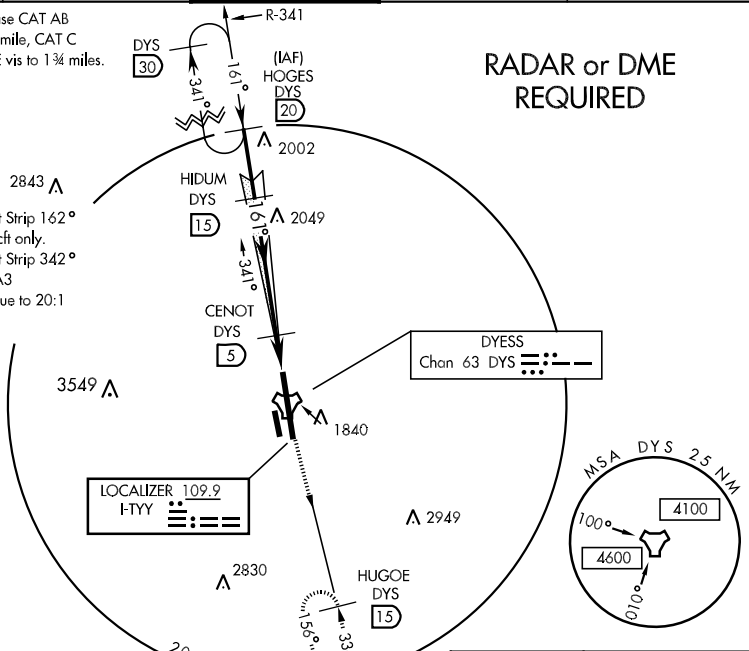
MISSED APPROACH: Climb to 4000 via DYS R-156 to HUGOE and hold.

ATIS *	ABILENE APP CON	DYESS TOWER	GND CON	ASR
385.7	125.0 338.3 EAST 127.2 282.3 WEST	133.0 257.675	118.35 275.8	

*** When ALS inop, increase CAT AB RVR to 50 and vis to 1 mile, CAT C vis to 1½ miles, CAT DE vis to 1¾ miles.

† Circling to parallel Assault Strip 162° Restricted to 317th AG acct only. Circling at night to Assault Strip 342° requires MAJCOM/DO/A3 (or equivalent) approval due to 20:1 visual area penetrations.

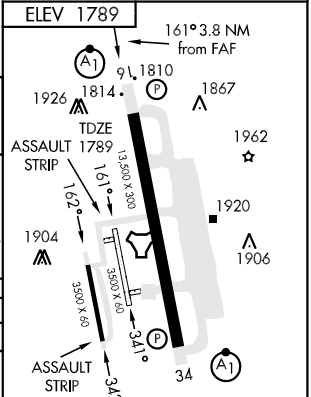
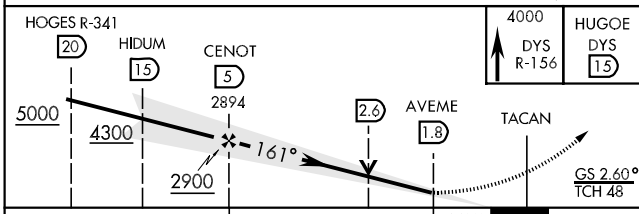
RADAR or DME REQUIRED



SC-2, 22 OCT 2009 to 19 NOV 2009

SC-2, 22 OCT 2009 to 19 NOV 2009

EMERG SAFE ALT 100 NM 4600



CATEGORY	A	B	C	D	E
S-ILS 16 *		1989/24	200 (200-½)		
S-LOC 16 **	2220/24	431 (500-½)	2220/40 431 (500-¾)	2220/50	431 (500-1)
CIRCLING †	2340-1	551 (600-1)	2340-1½ 551 (600-1½)	2360-2 571 (600-2)	2460-2½ 671 (700-2½)
S-ASR 16 ***	2300/24 511 (600-½)	2300/40 511 (600-¾)	2300/50 511 (600-1)	2300-1½	511 (600-1½)

LIRL Rwy 162°-342°
HIRL Rwy 16-34

FAF to MAP 3.2 NM

Knots	60	90	120	150	180
Min:Sec	3:12	2:08	1:36	1:17	1:04