

TACAN Chan 63	APCH CRS 165°	Rwy Idg 13,500 TDZE 1789 Arpt Elev 1789
-------------------------	-------------------------	--

JAL-2 [USAF]

DYESS AFB (KDYS)

▲ * When ALS inop, increase CAT C RVR to 60 and vis to 1¼ miles, CAT DE vis to 1½ miles.

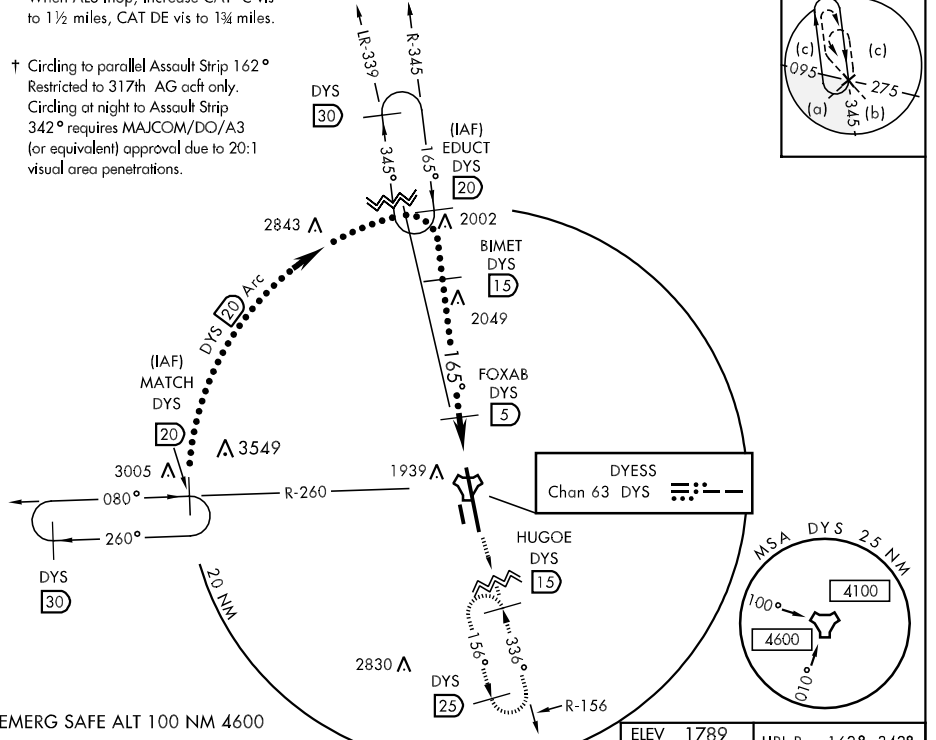
ALSF-1
A1

MISSED APPROACH: Climb to 4000 via DYS R-156 to HUGOE and hold.

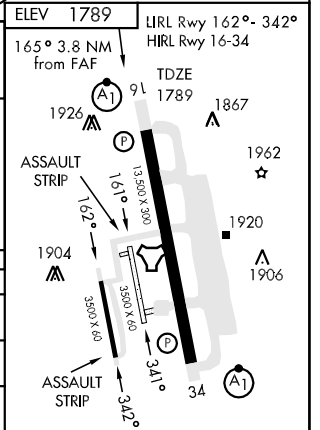
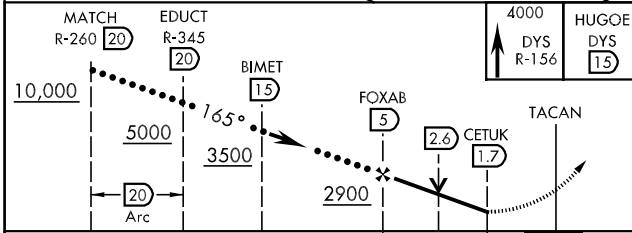
ATIS ★ 385.7	ABILENE APP CON 125.0 338.3 EAST 127.2 282.3 WEST	DYESS TOWER 133.0 257.675	GND CON 118.35 275.8	ASR
------------------------	---	-------------------------------------	--------------------------------	-----

** When ALS inop, increase CAT C vis to 1½ miles, CAT DE vis to 1¾ miles.

† Circling to parallel Assault Strip 162° Restricted to 317th AG acct only. Circling at night to Assault Strip 342° requires MAJCOM/DC/A3 (or equivalent) approval due to 20:1 visual area penetrations.



EMERG SAFE ALT 100 NM 4600



CATEGORY	C		D		E	
	S-16 *	2220/40 431 (500-¾)		2220/50	431 (500-1)	
CIRCLING †	2340-1½ 551 (600-1½)		2360-2 571 (600-2)		2460-2½ 671 (700-2½)	
S-ASR 16 **	2300/50 511 (600-1)		2300-1½	511 (600-1½)		

SC-2, 22 OCT 2009 to 19 NOV 2009

SC-2, 22 OCT 2009 to 19 NOV 2009