

LOC I-DYS 109.9	APCH CRS 341°	Rwy Idg 13,500 TDZE 1787 Arpt Elev 1789
---------------------------	-------------------------	--

JAL-2 [USAF]

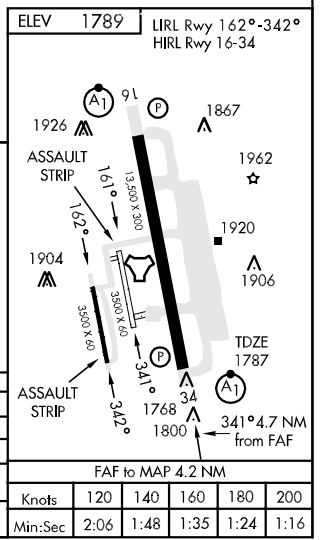
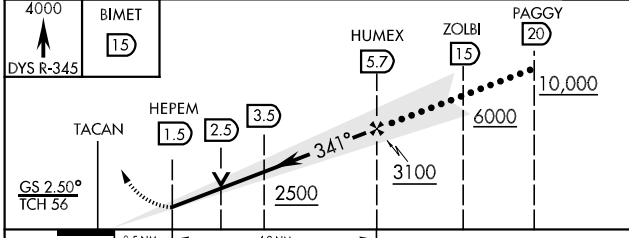
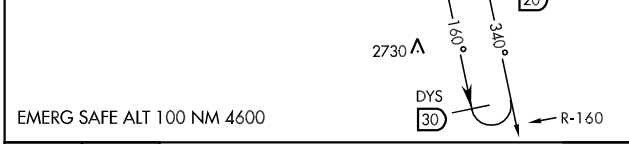
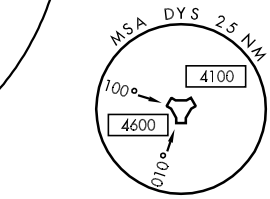
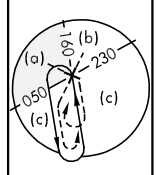
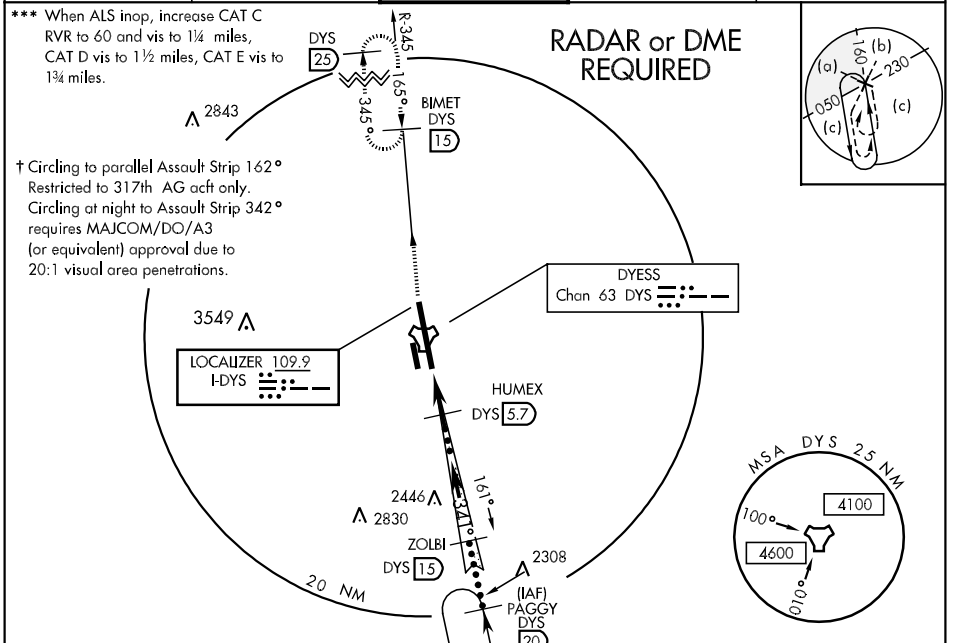
DYESS AFB (KDYS)

▼ * When ALS inop, increase RVR to 40 and vis to 3/4 mile.
 ** When ALS inop, increase CAT C RVR to 60 and vis to 1 1/4 miles, CAT DE vis to 1 1/2 miles.



MISSED APPROACH: Climb to 4000 via DYS R-345 to BIMET and hold.

ATIS ★ 385.7	ABILENE APP CON 125.0 338.3 EAST 127.2 282.3 WEST	DYESS TOWER 133.0 257.675	GND CON 118.35 275.8	ASR
------------------------	---	-------------------------------------	--------------------------------	-----



CATEGORY	C	D	E
S-ILS 34 *	1987/24 200 (200-1/2)		
S-LOC 34 **	2240/40 453 (500-3/4)	2240/50 453	(500-1)
CIRCLING †	2340-1 1/2 551 (600-1 1/2)	2360-2 571 (600-2)	2460-2 1/2 671 (700-2 1/2)
S-ASR 34 ***	2260/40 473 (500-3/4)	2260/50 473 (500-1)	2260/60 473 (500-1 1/4)

SC-2, 22 OCT 2009 to 19 NOV 2009

SC-2, 22 OCT 2009 to 19 NOV 2009