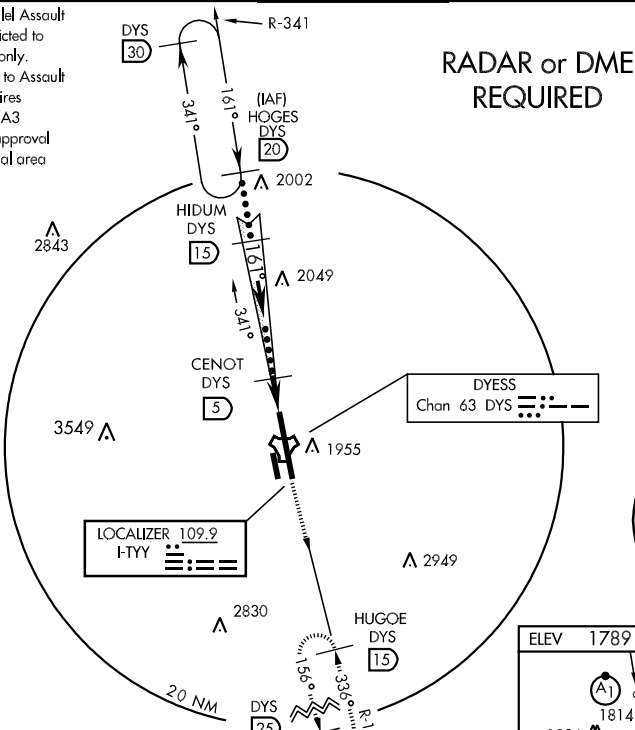


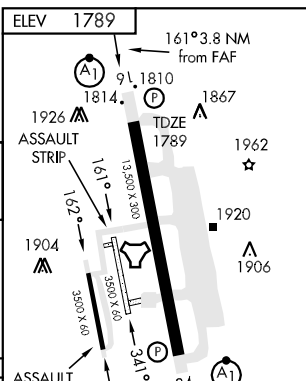
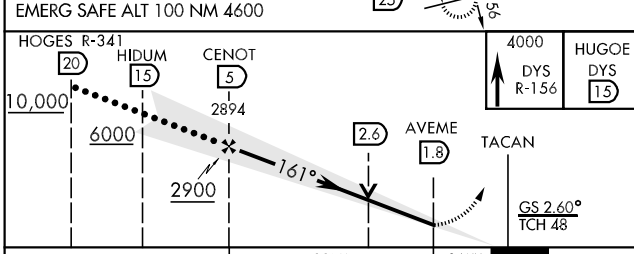
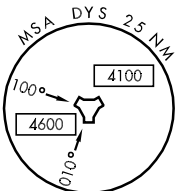
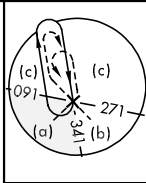
LOC I-TYY <b>109.9</b>	APCH CRS <b>161°</b>	Rwy Idg <b>13,500</b> TDZE <b>1789</b> Arpt Elev <b>1789</b>	JAL-2 [USAF]	DYESS AFB (KDYS)
▼ ** When ALS inop, increase RVR to 40 and vis to 3/4 mile. ** When ALS inop, increase CAT C RVR to 60 and vis to 1 1/4 miles, CAT DE vis to 1 1/2 miles. *** When ALS inop, increase CAT C vis to 1 1/2 miles, CAT DE vis to 1 3/4 miles.			ALSF-1 	MISSED APPROACH: Climb to 4000 via DYS R-156 to HUGOE and hold.

ATIS ★ <b>385.7</b>	ABILENE APP CON <b>125.0 338.3</b> EAST <b>127.2 282.3</b> WEST	DYESS TOWER <b>133.0 257.675</b>	GND CON <b>118.35 275.8</b>	ASR
------------------------	---	-------------------------------------	--------------------------------	-----

† Circling to parallel Assault Strip 162° restricted to 317h AG acft only. Circling at night to Assault Strip 342° requires MAJCOM/DO/A3 (or equivalent) approval due to 20:1 visual area penetrations.



**RADAR or DME REQUIRED**



CATEGORY	C	D	E
S-ILS 16 *	1989/24	200 (200-1/2)	
S-LOC 16 **	2220/40 431 (500-3/4)	2220/50 431 (500-1)	
CIRCLING †	2340-1 1/2	2360-2	2460-2 1/2
	551 (600-1 1/2)	571 (600-2)	671 (700-2 1/2)
S-ASR 16 ***	2300/50 511 (600-1)	2300-1 1/2 511 (600-1 1/2)	

FAF to MAP 3.2 NM					
Knots	120	140	160	180	200
Min:Sec	1:36	1:22	1:12	1:04	0:58

SC-2, 22 OCT 2009 to 19 NOV 2009

SC-2, 22 OCT 2009 to 19 NOV 2009