

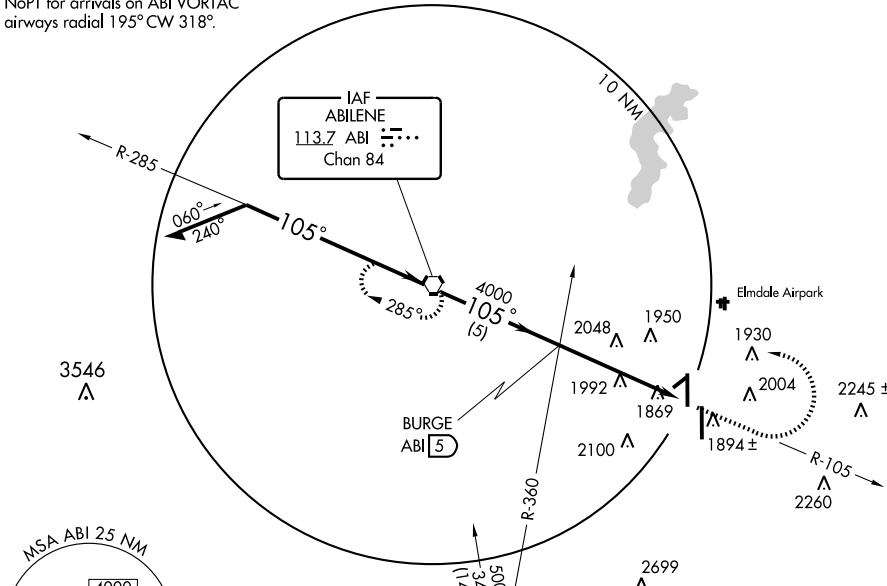
VOR ABI <b>113.7</b> Chan 84	APP CRS <b>105°</b>	Rwy Idg TDZE Apt Elev <b>1790</b>	<b>N/A</b> <b>N/A</b> <b>1790</b>
------------------------------------	------------------------	--	---

**VOR-A**  
ABILENE RGNL (ABI)

**ASR** MISSED APPROACH: Climb to 3000, then climbing left turn to 5000 direct ABI VORTAC and hold.

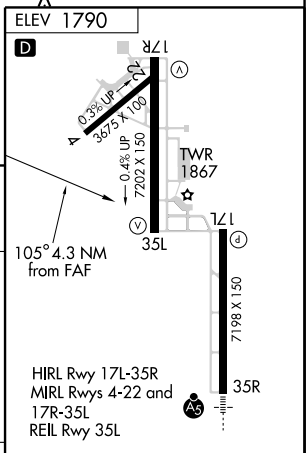
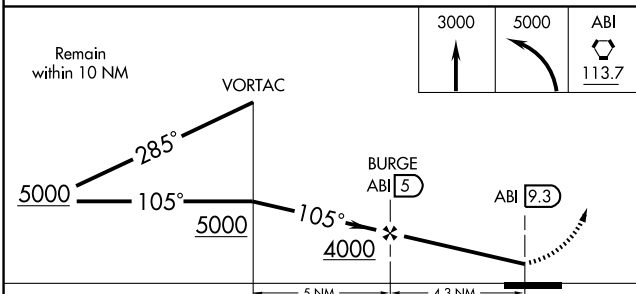
ATIS <b>118.25</b>	ABILENE APP CON <b>125.0 338.3</b> (EAST) <b>127.2 282.3</b> (WEST)	ABILENE TOWER <b>120.1 257.8</b>	GND CON <b>121.7 348.6</b>
-----------------------	---	-------------------------------------	-------------------------------

NoPT for arrivals on ABI VORTAC  
airways radial 195° CW 318°.



SC-2, 22 OCT 2009 to 19 NOV 2009

SC-2, 22 OCT 2009 to 19 NOV 2009



CATEGORY	A	B	C	D	FAF to MAP 4.3 NM					
CIRCLING	2300-1	510 (600-1)	2360-1½ 570 (600-1½)	2360-2 570 (600-2)	Knots	60	90	120	150	180
					Min:Sec	4:18	2:52	2:09	1:43	1:26