

RNAV (GPS) RWY 35R

ABILENE RGNL (ABI)

APP CRS 352°	Rwy Idg 7198
	TDZE 1776
	Apt Elev 1791

GPS or RNP-0.3 REQUIRED. DME/DME RNP-0.3 NA.
BARO VNAV NA BELOW -30°C (-22°F)
For inoperative SSALR, increase LNAV/VNAV Cat. D,E
visibility to RVR 5000.

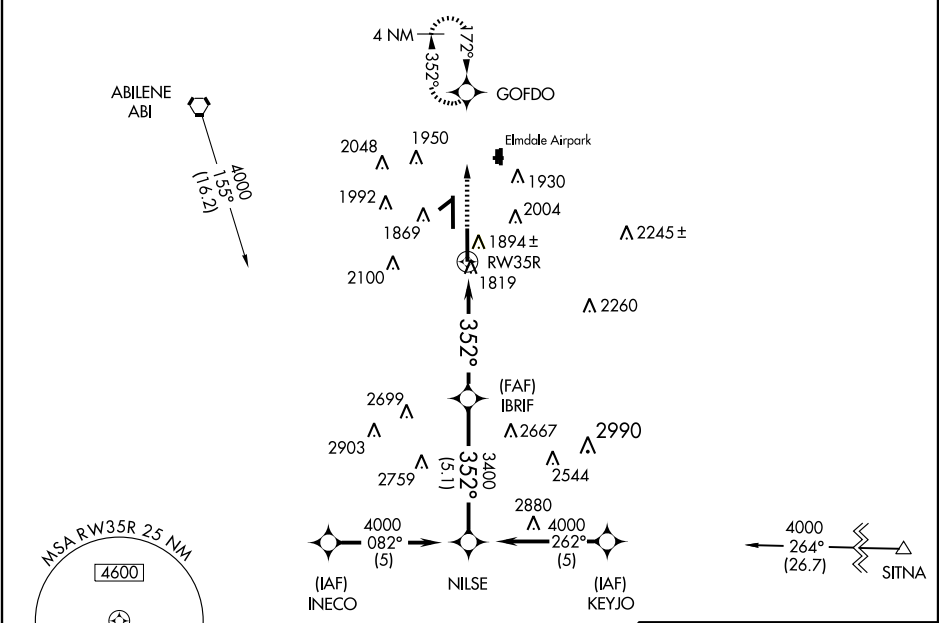
MALSR
 MISSED APPROACH: Climb to 4000 direct GOFDO and hold.

ATIS
118.25

ABILENE APP CON
125.0 338.3 (EAST)
127.2 282.3 (WEST)

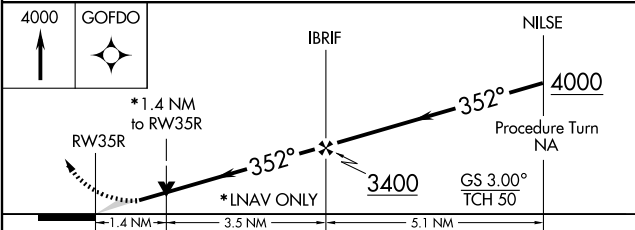
ABILENE TOWER
120.1 257.8

GND CON
121.7 348.6



SC-2, 22 OCT 2009 to 19 NOV 2009

SC-2, 22 OCT 2009 to 19 NOV 2009



CATEGORY	A	B	C	D	E
GLS PA DA	NA				
LNAV/VNAV DA	2080/24 304 (400-½)		2080/40 304 (400-¾)		
LNAV MDA	2260/24 484 (500-½)	2260/40 484 (500-¾)	2260/50 484 (500-1¼)	2260/60 484 (500-1½)	
CIRCLING	2260-1 469 (500-1)	2360-1½ 569 (600-1½)	2360-2 569 (600-2)	2400-2¼ 609 (700-2¼)	

